

MAP 5: OGDEN VALLEY OPEN LANDS

Legend

-  Ogden Valley Boundary
-  Lakes
-  Weber County Parks
-  State Route
-  Local Road

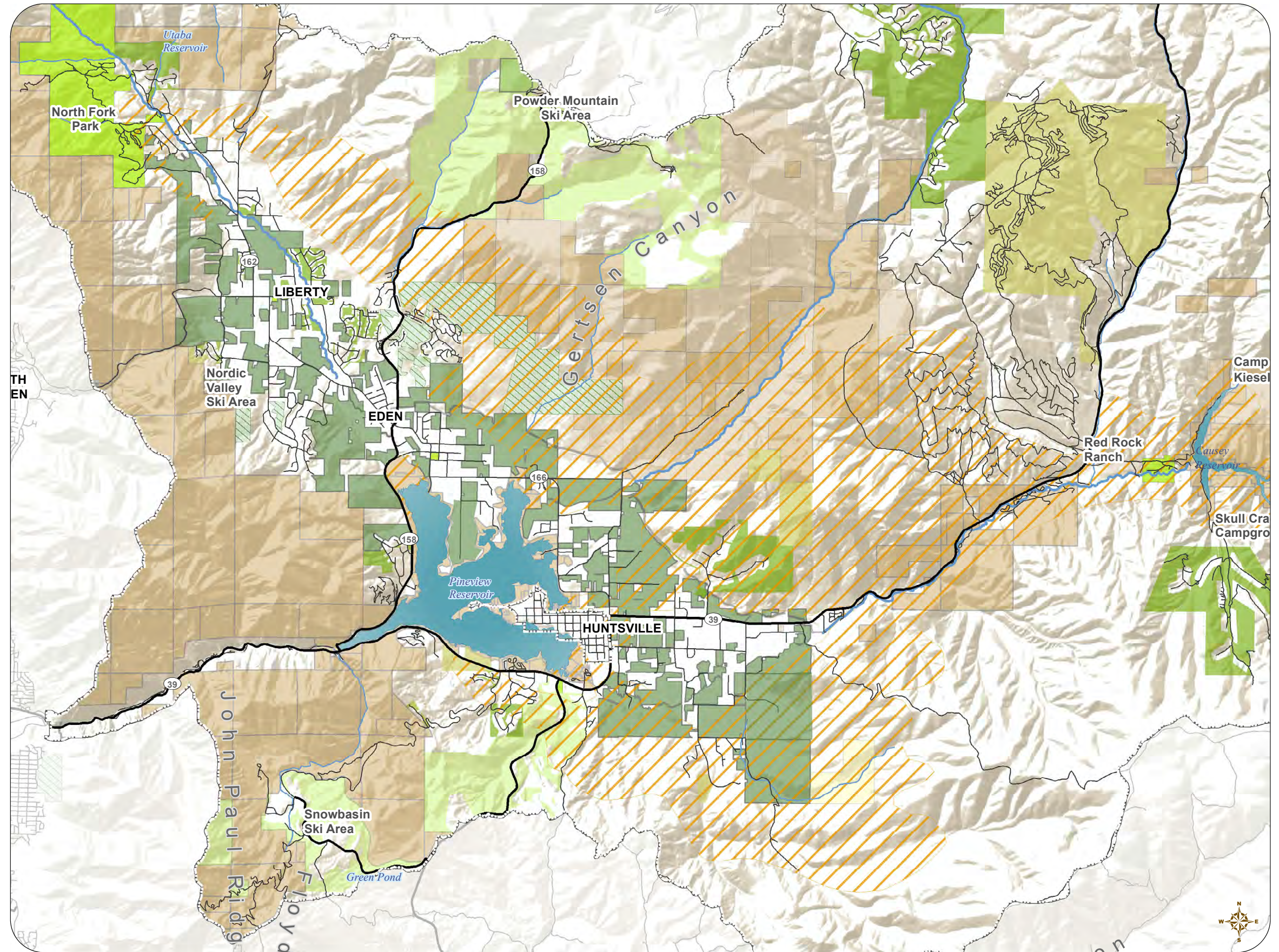
- Crucial Wildlife Habitats**
-  Crucial Wildlife Habitats
-  Stream protected by 100' Buffer
-  Stream protected by 50' Buffer

- Generally Open Lands**
-  Agricultural and Open Lands*
-  O-1 Open Space
-  3rd Party Conservation Easement
-  Development Agreement Open Space
-  Cluster Subdivision Open Space

- Public Lands**
-  United States of America
-  State of Utah
-  State of Utah (SITLA)

* Open land includes parcels designated as Greenbelt and over 10 acres in the AV-3 and FV-3 Zones. The Monastery and Stringtown Road were also included, as they are significant open spaces important for preservation.

Source:
 Logan Simpson
 UDOT Open Data, Updated on September 9, 2014
 Accessed on October 7, 2014
 Weber County
 USGS Open Data



 **Open Lands**

