

Storm Water Pollution: It's Up To Us

In Weber County, storm water flows through storm drains directly to local creeks and rivers with

NO TREATMENT.




Water quality can be affected by a number of natural elements as well as chemical elements introduced by humans.

What kind of contaminants might reach our rivers and streams?

• **Contaminants** resulting from unwise landscaping practices such as over applying or over watering might include: dirt, leaves, grass clippings, fertilizers, herbicides, and pesticides.

• **Chemicals** from household products from washing your car, painting, or household cleaners.

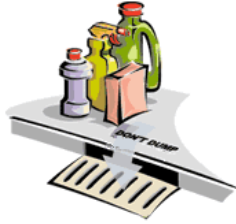
• **Toxins** such as oil or antifreeze that may leak from your car.



One pint of oil can produce a one acre slick on a water surface and can contaminate 250,000 gallons of water!

What Can You Do?

General Practices



Never use the gutter or storm drain system for disposal of household hazardous waste. If you wouldn't drink it, don't dump it.

- Store toxic products and chemicals indoors or in a shed or storage cabinet.
- Take unwanted hazardous materials and containers to the household hazardous waste disposal facility.

There is a Household Hazardous Waste Facility now located at the Weber County Solid Waste Facility at 867 West Wilson Lane. It is open from 8:00 am to 1:00 pm. on the 3rd Saturday April-September. Weber County homeowners can bring their household hazardous waste to the facility and it will be taken off their hands for **free!** Call 399-8803 for more information.

- **DO NOT WASH INTO THE STREET!** Do not wash tools and equipment in driveways, gutters or drainage ways. Wash over grassed or soil areas where wash water won't reach the street.

Automotive

● Take used motor oil and antifreeze to a recycling center or household hazardous waste facility.

● Inspect and maintain vehicles to reduce leakage of fluids.

● Reduce automotive emissions through regular maintenance and by limiting vehicle usage.

● Clean up spills with kitty litter or absorbent material and let dry. Dispose of cleanup as solid waste.

● Vehicles should be washed at a commercial car wash. Vehicles can be washed on the lawn with biodegradable soap to reduce wash water flows to the storm drain system.

Recycling Oil

● Pour waste oil into an unbreakable container (plastic milk jug), seal and label. Call 399-8381 or 1-800-458-0145 or check the list on the reverse side for facilities that accept used oil.

● Do not mix other materials with oil.



Recycling used oil could reduce national petroleum imports by 25.5 million barrels per year!

For additional information on Storm Water Protection refer to the following brochures:

- Erosion Control
- Fresh Concrete and Mortar Application
- Household and Vehicle Maintenance
- Impervious Surfaces
- Landscaping, Gardening, and Yard Maintenance
- Paint and Household Hazardous Waste
- Pet Waste Water Quality
- Utah and its Water, Why Conserve
- Water Conservation Inside the Home
- Water Conservation Outside the Home
- Xeriscaping



For more information about the Weber County Storm water quality management program and additional brochure, contact:

Weber County Storm Water Management
 Dr. George S. Burbidge
 444-24th St. Ogden, UT 84401
 Office (801)399-8677
 Fax (801)625-3699
www.co.weber.ut.us/stormwater.

Brochure created by Salt Lake County Engineering Division modified by Weber County Storm Water Management Division.

Spill Response

Dial 911

-or-

State Of Utah

Environmental Response

(801) 536-4123

Utah Division of Water Quality

(801) 538-6146

Local Pollution Control

Agencies:

Environmental Health Division of the
Weber/Morgan Health Department

(801) 591-7168



1-800-458-0145

*Used Oil Recyclers
(for DIYers in Weber County)*

Weber County Transfer Station

Auto Zone Stores

Checker Auto Parts Stores

NAPA Auto Parts Stores

Pep Boys Stores

Little Tire & Lube

Jiffy Lube

The preceding list is not all encompassing nor does it constitute an endorsement by Weber County of any particular company

HOUSEHOLD AND VEHICLE MAINTENANCE



RECOMMENDED METHODS FOR STORM WATER PROTECTION

