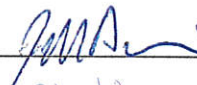




## Weber County – 12th Street Corridor, Segment 3

Owner : Weber County				Change Order #	4
Engineer: Stanley Consultants					
Contractor: Staker Parson				Date:	4/8/2020
Description: Drainage Changes on 7500 West					
Item No.	Description	Unit	Quantity	Unit Price	Amount Increase/Decrease
12th Street - Item #3	72-inch Storm Drain Manhole	EA	-0.809	\$6,825.00	-\$5,521.43
12th Street - Item #36	Remove and Dispose of Existing Pipe (< 36")	LF	-58	\$18.00	-\$1,044.00
12th Street - Item #38	Remove Manhole	EA	-1	\$1,000.00	-\$1,000.00
12th Street - Item #62	Adjust Manhole Cover to Grade	EA	1	\$630.00	\$630.00
12th Street - Item #70	24-inch RCP Storm Drain Pipe	LF	-54	\$137.00	-\$7,398.00
130	30-inch RCP Pipe Extension 7500 West	LS	1	\$4,868.00	\$4,868.00
131	Miscellaneous West Warren Waterline Conflicts 7500 West	LS	1	\$11,784.00	\$11,784.00
<b>Total Net Changes for this change order</b>					<b>\$2,318.58</b>
<b>Original Contract Amount</b>					<b>\$10,500,000.00</b>
<b>Change Order 1</b>					<b>\$90,477.16</b>
<b>Change Order 2</b>					<b>\$0.00</b>
<b>Change Order 3</b>					<b>\$17,076.20</b>
<b>Change Amount of this Change Order</b>					<b>\$2,318.58</b>
<b>Total Adjusted Contract Amount</b>					<b>\$10,609,871.94</b>

Contractor:  Date: 4-8-2020

Digitally signed by Rick L. Nelson  
Date: 2020.04.08 08:57:41 -06'00'

Engineer:  Date: \_\_\_\_\_

Owner:  Date: 4/20/20

Commission: \_\_\_\_\_ Date: \_\_\_\_\_



## **Weber County – 12<sup>th</sup> Street Corridor, Segment 3 Change Order 4**

This change order is to address some storm drain changes and mitigation efforts for multiple utility conflicts. The first issue that this change order covers are the changes to the drainage crossing at 7500 West and 900 South. The new 24” RCP storm drain line crossing 900 South at 7500 West was designed with the existing Weber Basin Waterline being replaced with a new line in a new alignment at a lower depth. This location at 7500 West is further west than the bidding limits and therefore the existing Weber Basin Waterline will not be replaced in this location during this phase of the project. The existing waterline conflicts with the new 24” RCP drainage crossing. It was discussed in an on-site meeting on Friday February 21<sup>st</sup> and addressed in RFI 10 to not install the new 24” RCP pipe and to just leave the existing 24” CMP crossing in place. The new 24” RCP pipe will be installed on the next phase of the project after the existing Weber Basin Waterline gets replaced and relocated. This change to utilize the existing pipe and manhole will include the changes described below and as shown on the plans in Attachment 1. The existing manhole and 24” CMP pipe will stay in place, the 30” RCP along 7500 West will need to be tied into the existing manhole instead of connecting the new 24” RCP pipe into CB-20 and the existing manhole will need to be adjusted to grade. (Total costs of changes to the storm drain crossing at 7500 West and 900 South = -\$14,333.43)

The next issue that this change order covers is to extend the new 30” RCP pipe further down the existing canal than originally designed on 7500 West. The designed plan was to install 26 feet of the 30” RCP south of CB-99 and daylight the outfall back into the existing ditch. After installing the 26 feet, the outfall was too close to the existing dirt access road and could cause the roadway to eventually erode. It was discussed and agreed upon in the weekly project coordination meeting with the project team to extend the new 30” RCP pipe an additional 16 feet to move the outfall further away from the existing access road and to protect an existing phone line spanning the ditch. See Attachment 2 for the new pipe extents. The pipe extension was agreed upon to be paid as time and material because the original 26 feet of pipe was already complete and the contractor had to move back to the end of 7500 West to complete this added work. The existing ditch that this drainage line ties into is backed up with silt causing the outfall of the end section to be the lowest point on 7500 West, collecting water from not only the new system but also water from the surrounding irrigation ditches. This pipe extension was very labor intensive due to the existing wet conditions faced in the field. The contractor’s storm drain crew pulled off the mainline pipe installation to extend this pipe run. It ended up taking all morning in hip waders to get the damn setup, the shoring setup and water drained from the site to be able to install the pipe extension, reinstall the flared end section and get everything backfilled and opened back up. The work also required additional traffic control to provide one-way flagging while the work was being performed due to the existing narrow roadway. (Total costs of extending the 30” RCP further south = \$4,868.00)

Some of the existing West Warren Waterline services along 7500 West were expected to come in conflict with the new 30” RCP storm drain pipe being installed at the start of the project. It was discussed and agreed upon during the project preconstruction meeting to track the mitigation work for these conflicts using time and material due to not knowing the extents of how many we would encounter. This pay item will cover all the of these conflicts with the waterline services and fire hydrants along 7500 West. This

pay item will include the following work; waterline service loops at 1010 South, 1145 South, 1290 South, 960 South and looped fire hydrant service lines at stations 13+50 and 3+60 on 7500 West. (Total costs of mitigating the conflicts with the West Warren Waterline on 7500 West = \$11,784.00)

The following items are being adjusted or added to the contract.

Adjust Item: 7500 West #3 72-inch Storm Drain Pipe Manhole

Adjust Item: 12<sup>th</sup> Street #36 Remove and Dispose of Existing Pipe (< 36’)

Adjust Item: 12<sup>th</sup> Street #38 Remove Manhole

Adjust Item: 12<sup>th</sup> Street #62 Adjust Manhole Cover to Grade

Adjust Item: 12<sup>th</sup> Street #70 24-inch RCP Storm Drain Pipe

Add Item: #130 30” RCP Pipe Extension 7500 West

Add Item: #131 Miscellaneous West Warren Waterline Conflicts 7500 West

(Adjust 7500 West Item #3 – 72-inch Storm Drain Manhole) Due to the storm drain conflict with the existing Weber Basin Waterline it was discussed and agreed upon to utilize the existing 24” CMP storm drain crossing and the existing manhole on the southeast corner of the intersection of 900 South and 7500 West. Using the existing manhole will alleviate the need of a new 72” manhole to replace it with. This manhole was already custom cast for the project and unable to return back to the manufacturer. It was agreed upon to have the County purchase the manhole base for use on another project for the County. The base of the manhole was paid as a portion of this item (0.191% = \$1,303.58) so only the remaining 0.809% of the manhole will be taken out of the project to account for the existing manhole hole to stay in place and not be replaced. This item will be adjusted at the original bid unit rate as shown in the change order summary table below.

(Adjust 12<sup>th</sup> Street Item #36 – Remove and Dispose of Existing Pipe (< 36’)) The existing 24” CMP pipe crossing 900 East at 7500 West will remain in place to avoid the conflict with the existing Weber Basin Waterline. This existing pipe will be removed with the next phase of the project once the new Weber Basin Waterline is relocated. This item is to be adjusted by -58 feet to account of the existing storm drain line to stay in place. This item will be adjusted at the original bid unit rate as shown in the change order summary table below.

(Adjust 12<sup>th</sup> Street Item #38 – Remove Manhole) The existing manhole on the southeast corner of the 7500 West and 900 South intersection will not be removed and will need to be protected in place due to the conflict between the storm drain and the existing Weber Basin Waterline. The design plans called out for this manhole to be removed but will now be left in place utilizing the existing 24” CMP pipe crossing. The manhole will need to be adjusted to grade and the new 30” RCP pipe running along 7500 West will need to be tied into this manhole. This item will be adjusted by -1 each to account for the existing manhole staying in place and being utilized in this phase of the project. This item will be adjusted at the original bid unit rate as shown in the change order summary table below.

(Adjust 12<sup>th</sup> Street Item #62 – Adjust Manhole Cover to Grade) The existing manhole on the southeast corner of the intersection at 7500 West and 900 South will not be removed and remain in place as part of an overall decision to avoid storm drain conflicts with the existing Weber Basin Waterline. After completion of the roadway reconstruction, the final roadway profile will be different than the existing profile and the existing manhole will need to be adjusted to match the new roadway grade. This item will

be adjusted by 1 each to account for this manhole needing to be adjusted to match the final roadway grade. This item will be adjusted at the original bid unit rate as shown in the change order summary table below.

(Adjust 12<sup>th</sup> Street Item #70 – 24-inch RCP Storm Drain Pipe) To avoid the conflict with the existing Weber Basin Waterline it was agreed upon to utilize the existing 24” CMP crossing and eliminate the new 24” RCP crossing. The new 24” RCP line will be installed with the next phase of the project after the Weber Basin Waterline is relocated. This item will be adjusted by -54 feet to account for not installing the new 24” RCP line and keeping the existing line in place. Item will be adjusted at the original bid unit rate as shown in the change order summary table below.

(Item #130 – 30” RCP Pipe Extension 7500 West) It was discussed and agreed upon to extend the 30” RCP drainage pipe an additional 16 feet to the south. This adjustment to move the drainage outfall further south will protect the existing access road at the far south end of the 7500 West limits. To extend the pipe an additional 16 feet the contractor had to remove the newly installed end section, install a temporary dam, dewater the storm drain side of the dam, install the additional pipe and then reinstall the end section. This pay item is to cover all the labor, material and equipment to furnish and install the additional 16 feet of 30” RCP. This pay item also covers the traffic control that was needed to on-way flag 7500 West while the work was being performed. This pay item was tracked in the field as time and materials due to the additional work necessary to install the 30” RCP pipe extension. See Attachment 3 for all field tracking sheets and the change order summary table below for the totals.

(Item #131 – Miscellaneous West Warren Waterline Conflicts 7500 West) Without knowing the exact location of the West Warren Waterline services along 7500 West the project team knew that we would run into a few of them while installing the 30” RCP line down 7500 West. These conflicts were discussed during the pre-construction meeting and it was agreed upon to track and cover these costs using time and materials. The new storm drain line ran into a few of the irrigation services and some fire hydrants that needed to be adjusted. All time and materials required to mitigate these conflicts were tracked in the field between the contractor and the engineer. All tracking sheets for this item have been reviewed, checked and are shown in Attachments 4. See the change order summary table below for the item total.

Staker Parson submitted a cost for each item as follows:

Item No.	Description	Unit	Quantity	Unit Price	Amount Increase/Decrease
12th Street - Item #3	72-inch Storm Drain Manhole	EA	-0.809	\$6,825.00	-\$5,521.43
12th Street - Item #36	Remove and Dispose of Existing Pipe (< 36")	LF	-58	\$18.00	-\$1,044.00
12th Street - Item #38	Remove Manhole	EA	-1	\$1,000.00	-\$1,000.00
12th Street - Item #62	Adjust Manhole Cover to Grade	EA	1	\$630.00	\$630.00
12th Street - Item #70	24-inch RCP Storm Drain Pipe	LF	-54	\$137.00	-\$7,398.00
130	30-inch RCP Pipe Extension 7500 West	LS	1	\$4,868.00	\$4,868.00



131	Miscellaneous West Warren Waterline Conflicts 7500 West	LS	1	\$11,784.00	\$11,784.00
<b>Total Net Changes for this change order</b>					<b>\$2,318.58</b>

All changes to the original pay items have been adjusted at the original bid unit rates. All time and materials pay items have been tracked, checked and agreed on in the field for this change order and are thereby recommended for acceptance.

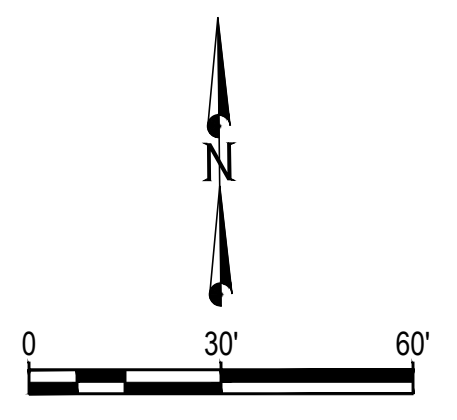
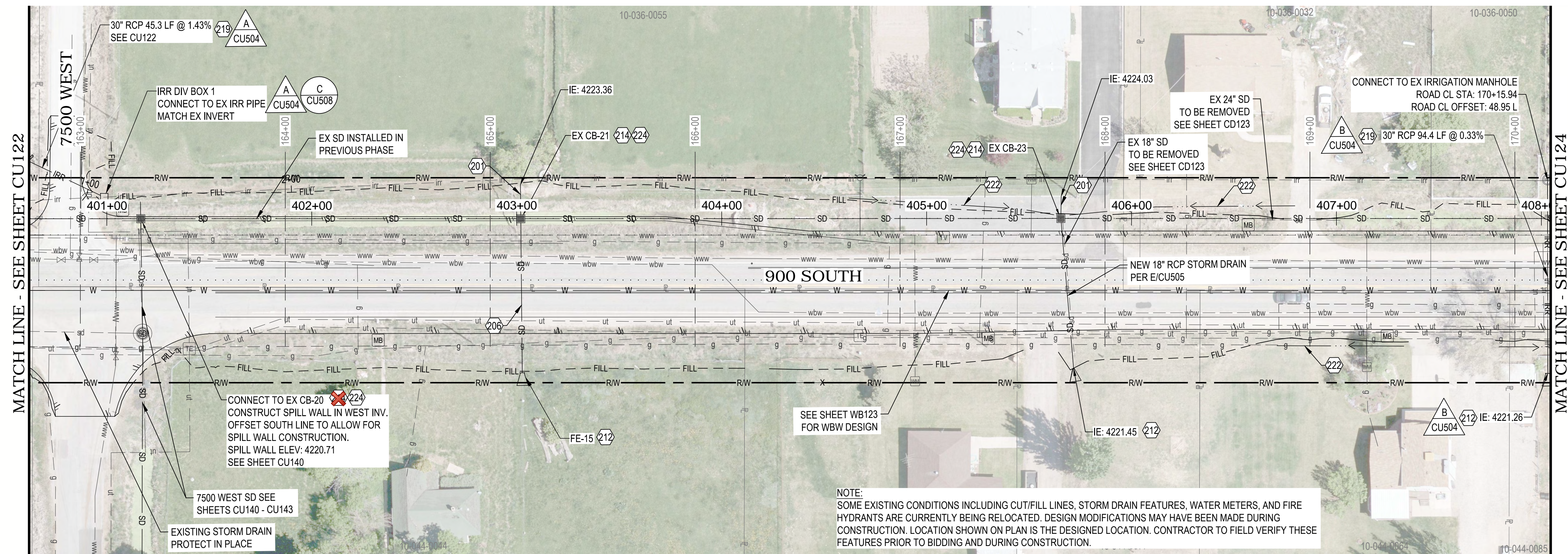
**Contract Time**

This work does not affect the Contractor's critical path, so no additional time will be added for this change order.

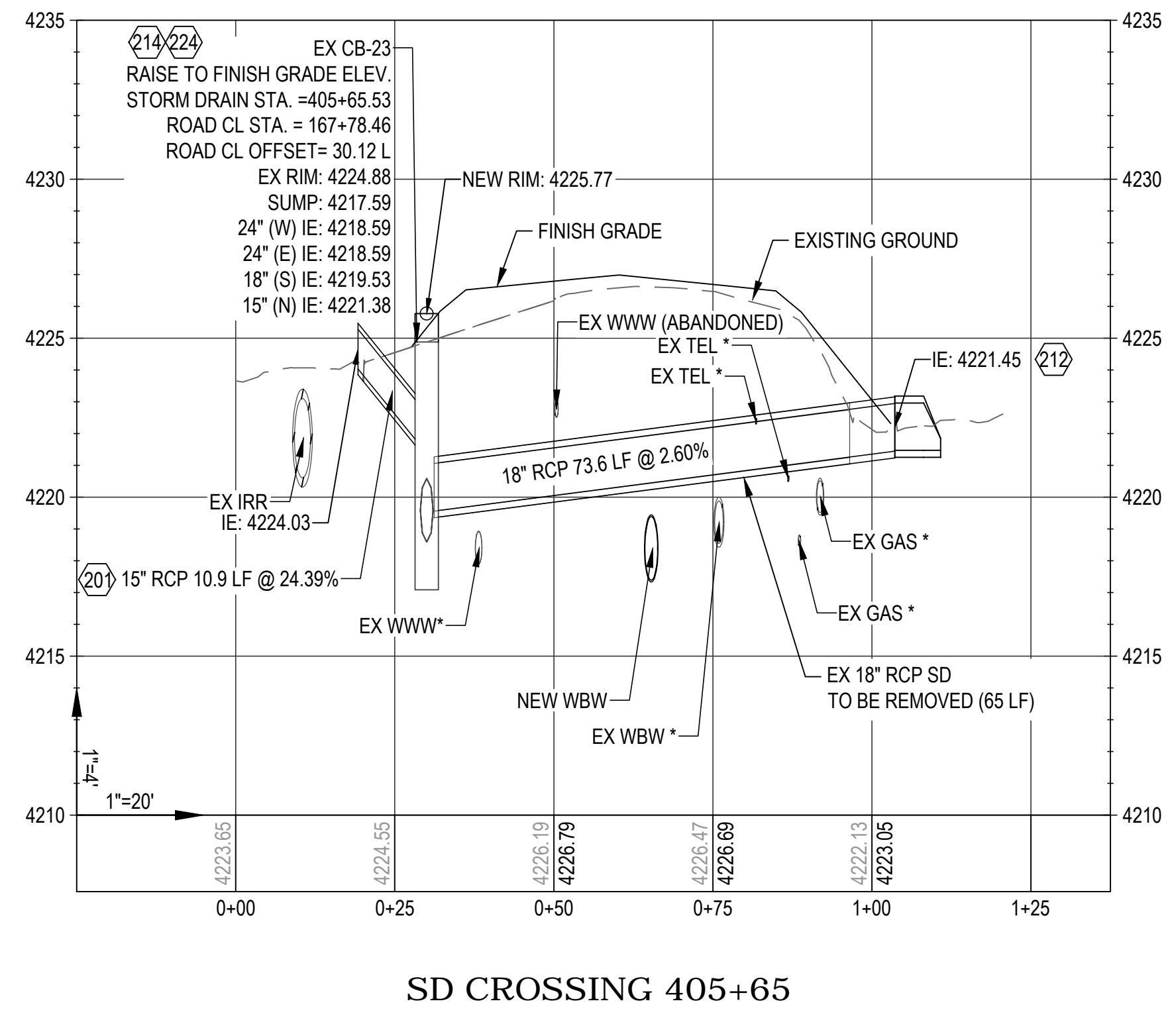
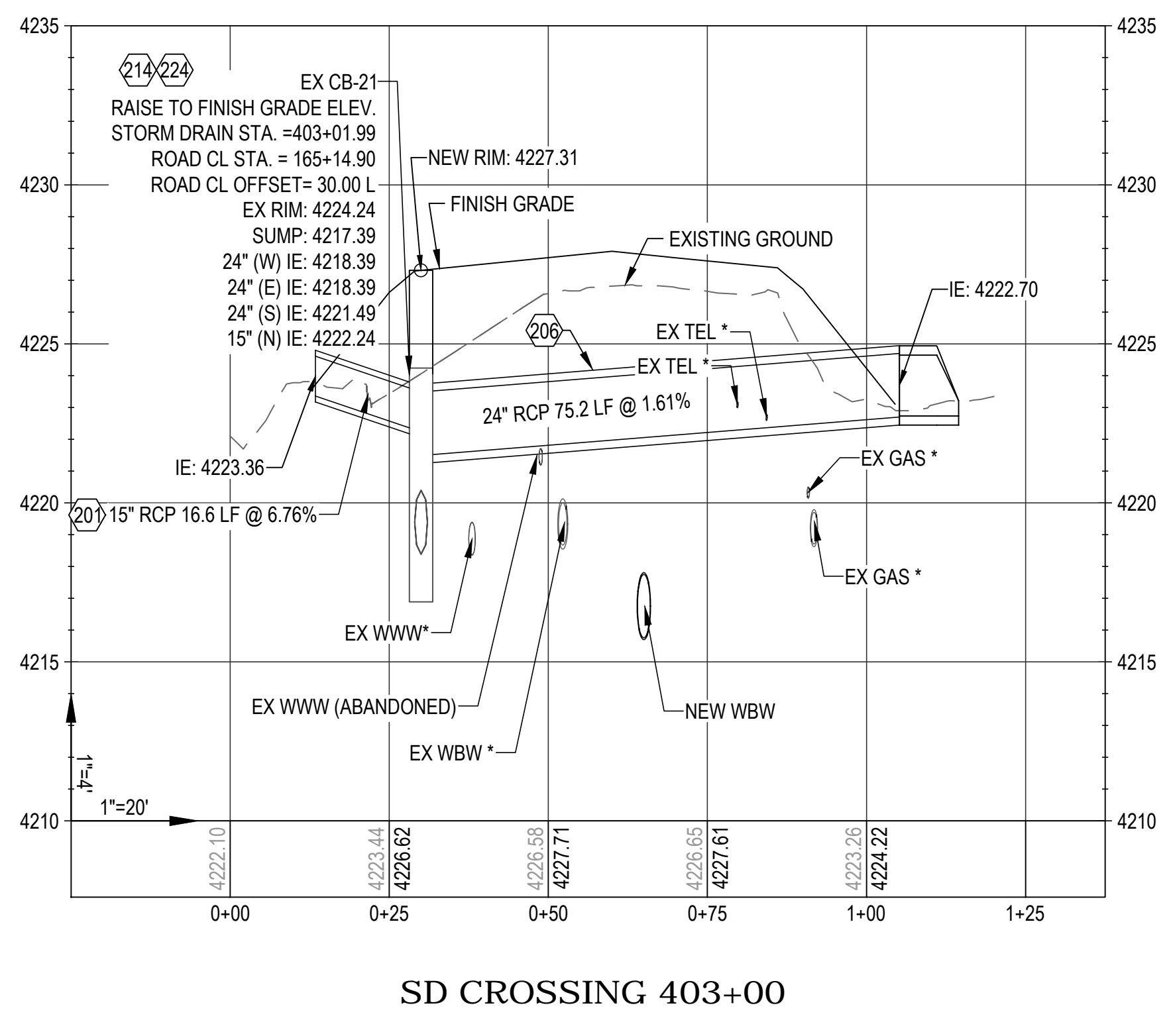
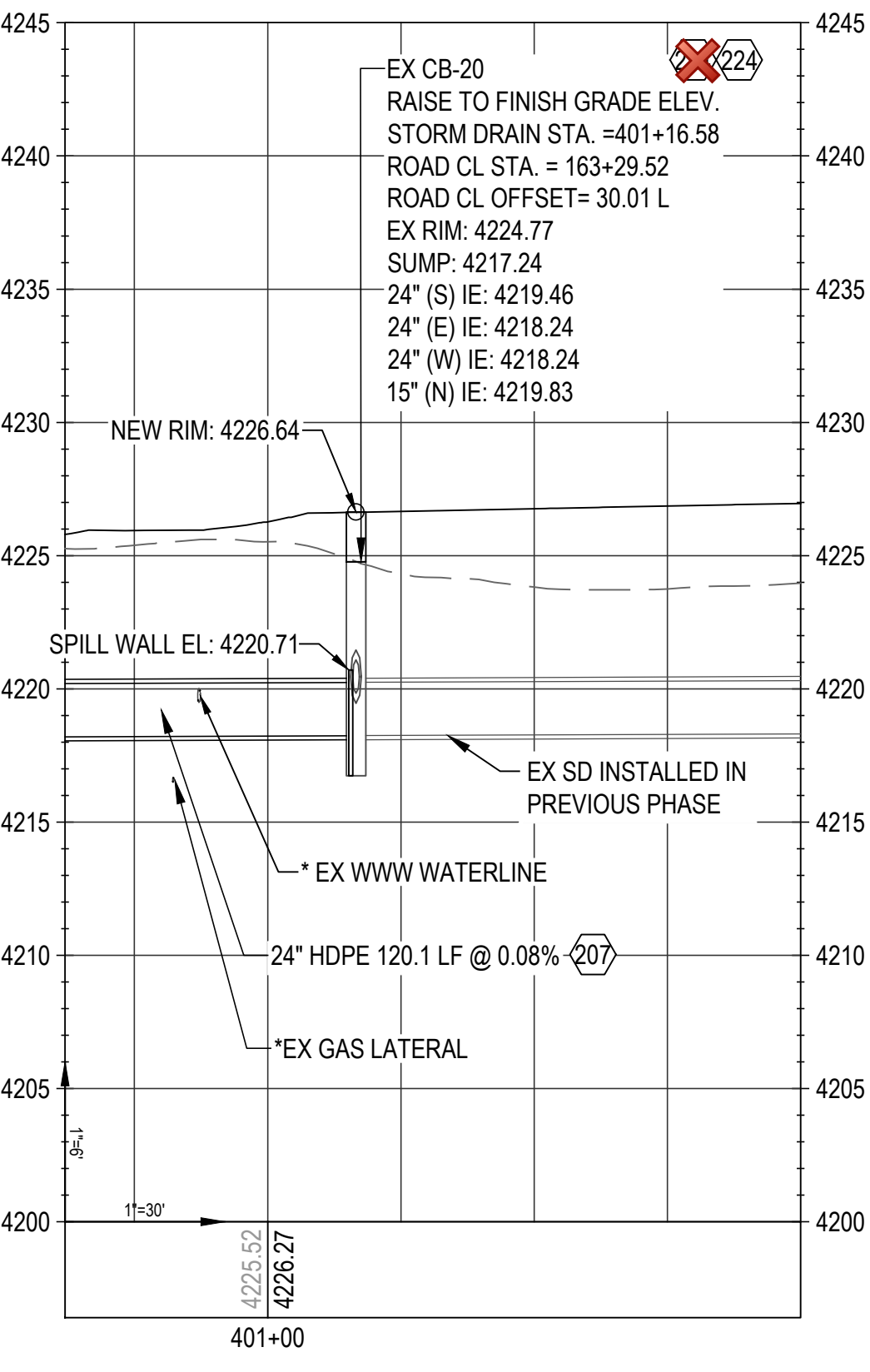








- KEY NOTES**
- (201) 15" RCP STORM DRAIN PER E/CU505
  - (202) 15" HDPE STORM DRAIN PER F/CU505
  - (203) STORM DRAIN MANHOLE PER D/CU505
  - (204) 3'x3' CONCRETE STORM DRAIN CATCH BASIN PER B/CU505
  - (205) 12" RCP DRIVEWAY CULVERT PER B/CU506
  - (206) 24" RCP STORM DRAIN PER E/CU505
  - (207) 24" HDPE STORM DRAIN PER F/CU505
  - (208) 30" RCP STORM DRAIN PER E/CU505
  - (209) 30" HDPE STORM DRAIN PER F/CU505
  - (210) 36" RCP STORM DRAIN PER E/CU505
  - (211) 4'x4' CONCRETE STORM DRAIN CATCH BASIN PER A/CU505
  - (212) FLARED END SECTION PER G/CU505
  - (213) HEADWALL PER A/CU506
  - (214) CONNECT TO EX CATCH BASIN
  - (215) RELOCATE WATER METER PER A/CU507
  - (216) RELOCATE FIRE HYDRANT PER B/CU507
  - (217) 18" RCP IRRIGATION PER B/CU508
  - (218) 24" RCP IRRIGATION PER B/CU508
  - (219) 30" RCP IRRIGATION PER B/CU508
  - (220) 30" HDPE IRRIGATION PER B/CU508
  - (221) IRRIGATION DIVERSION BOX PER A/CU505
  - (222) DRAINAGE DITCH PER D/CU507
  - (223) 4'x4' CONCRETE STORM DRAIN CATCH BASIN PER A/CU505
  - (224) RAISE EX CATCH BASIN TO GRADE
- PIPE ELEVATION ESTIMATED.  
CONTRACTOR SHALL VERIFY SIZE AND DEPTH. IF CONFLICT ENCOUNTERED, CONTACT ENGINEER.



- UTILITY LEGEND**
- W PROPOSED WBW WATERLINE
  - IRR PROPOSED IRRIGATION LINE
  - SD PROPOSED STORM DRAIN
  - PROPOSED EDGE OF ASPHALT
  - PROPOSED DITCH
  - RW RIGHT OF WAY LINE
  - wbw EX WEBER BASIN WATER
  - www EX WEST WARREN WATER
  - bctv EX BURIED CABLE TV
  - fo EX FIBER OPTIC
  - g EX GAS LINE
  - irr EX IRRIGATION LINE
  - op EX OVERHEAD POWER
  - sd EX STORM DRAIN
  - ut EX UNDERGROUND TELEPHONE
  - WM WATER METER

File Path: P:\14132F\Weber County Survey and ROW\12th Street\Drawings\SEGMENT 3\Drainage Sheets\SD - (B) Full Rebuild Set.dwg Aug 31, 2019 - 10:09am

NO.	DATE	DESCRIPTION

IF THE ABOVE SCALE BAR DOES NOT MEASURE 1-INCH IN LENGTH, DO NOT USE THIS DRAWING FOR SCALING PURPOSES. DIMENSIONS AND MEASUREMENTS SPECIFIED IN THE DRAWING TAKE PRECEDENCE TO SCALED MEASUREMENTS.

THE INFORMATION CONTAINED IN THIS DRAWING IS THE PROPERTY OF CRS ENGINEERS AND IS NOT TO BE REPRODUCED, MODIFIED OR USED FOR ANY OTHER PROJECT OR EXTENSION OF THIS PROJECT EXCEPT BY AGREEMENT WITH CRS ENGINEERS.

PRINCIPAL: M. HIRST  
 PROJECT MANAGER: M. PORTER  
 CHECKED BY: B. JONES  
 DRAWN BY: K. ACHTER  
 DRAWING SCALE: AS SHOWN  
 ISSUE DATE: AUGUST 30, 2019

**CRS ENGINEERS**  
 Answers to Infrastructure®  
 PO Box 280 | 160 S Main, Ste 200 | Farmington, UT 84025 | P: 801.939.5565 | www.crsengineers.com

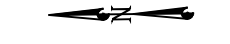
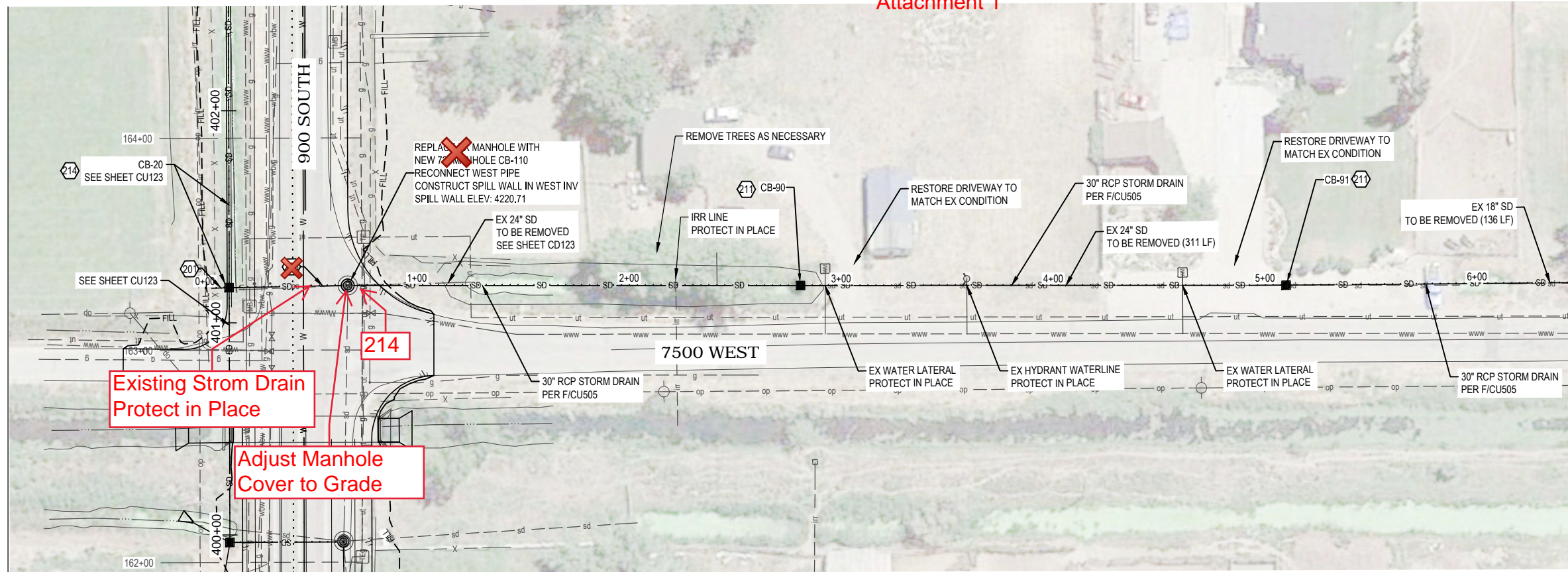
WEBER COUNTY  
 12TH STREET CORRIDOR DESIGN  
 SEGMENT 3  
 DRAINAGE PLAN & PROFILE

STAMP: WEBCOUNTY, UTAH

SHEETS ARE DRAWN ON A 22X34 SHEET; ANY REPRODUCTIONS MADE NOT AT THIS SIZE WILL NOT BE TO SCALE

PROJECT NUMBER: 14132F  
 SHEET: 89 OF 153  
 SHEET NUMBER: CU123





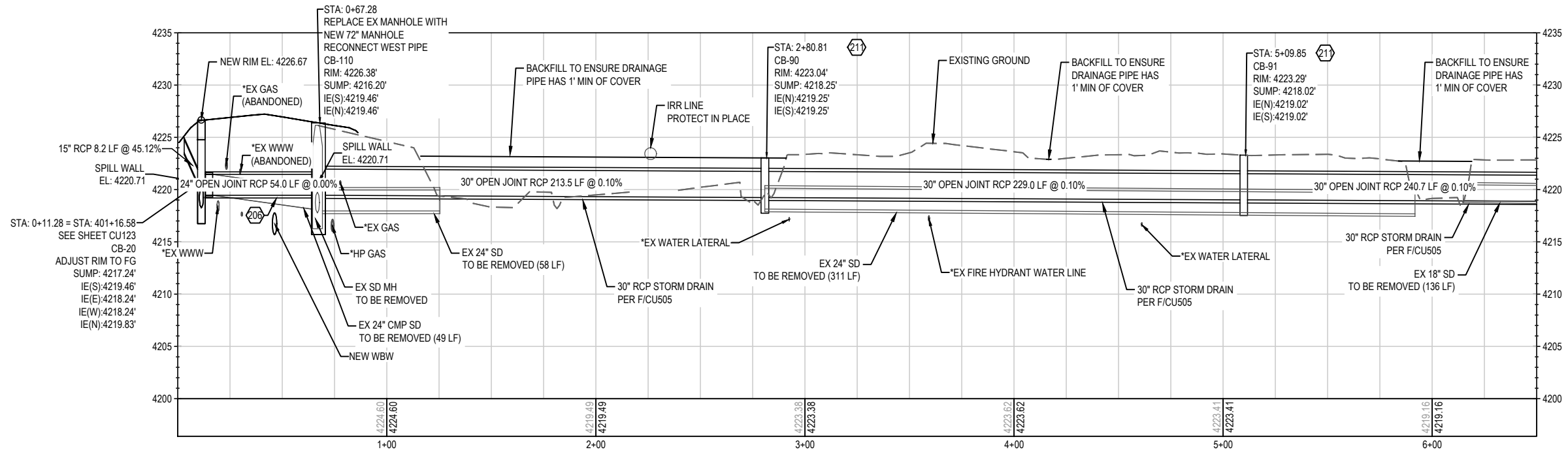
**KEY NOTES**

- 201 15" RCP STORM DRAIN PER E/CU505
- 202 15" HDPE STORM DRAIN PER F/CU505
- 203 STORM DRAIN MANHOLE PER D/CU505
- 204 3'x3' CONCRETE STORM DRAIN CATCH BASIN PER B/CU505
- 205 12" RCP DRIVEWAY CULVERT PER B/CU506
- 206 24" RCP STORM DRAIN PER E/CU505
- 207 24" HDPE STORM DRAIN PER F/CU505
- 208 30" RCP STORM DRAIN PER E/CU505
- 209 30" HDPE STORM DRAIN PER F/CU505
- 210 36" RCP STORM DRAIN PER E/CU505
- 211 4'x4' CONCRETE STORM DRAIN CATCH BASIN PER A/CU505
- 212 FLARED END SECTION PER G/CU505
- 213 HEADWALL PER A/CU506
- 214 CONNECT TO EX CATCH BASIN
- 215 RELOCATE WATER METER PER A/CU507
- 216 RELOCATE FIRE HYDRANT PER B/CU507
- 217 18" RCP IRRIGATION PER B/CU508
- 218 24" RCP IRRIGATION PER B/CU508
- 219 30" RCP IRRIGATION PER B/CU508
- 220 30" HDPE IRRIGATION PER B/CU508
- 221 IRRIGATION DIVERSION BOX PER A/CU508
- 222 DRAINAGE DITCH PER D/CU507
- 223 4'x4' CONCRETE STORM DRAIN CATCH BASIN PER A/CU505
- 224 RAISE EX CATCH BASIN TO GRADE  
PIPE ELEVATION ESTIMATED.  
CONTRACTOR SHALL VERIFY SIZE AND DEPTH. IF CONFLICT ENCOUNTERED, CONTACT ENGINEER.

MATCHLINE SEE CUI141

Existing Storm Drain  
Protect in Place

Adjust Manhole  
Cover to Grade



**UTILITY LEGEND**

- W PROPOSED WBW WATERLINE
- IRR PROPOSED IRRIGATION LINE
- SD PROPOSED STORM DRAIN
- PROPOSED EDGE OF ASPHALT
- PROPOSED DITCH
- RW RIGHT OF WAY LINE
- wbw EX WEBER BASIN WATER
- www EX WEST WARREN WATER
- bctv EX BURIED CABLE TV
- fo EX FIBER OPTIC
- g EX GAS LINE
- irr EX IRRIGATION LINE
- op EX OVERHEAD POWER
- sd EX STORM DRAIN
- ut EX UNDERGROUND TELEPHONE
- WM WATER METER

**NOTE:**  
SOME EXISTING CONDITIONS INCLUDING CUT/FILL LINES, STORM DRAIN FEATURES, WATER METERS, AND FIRE HYDRANTS ARE CURRENTLY BEING RELOCATED. DESIGN MODIFICATIONS MAY HAVE BEEN MADE DURING CONSTRUCTION. LOCATION SHOWN ON PLAN IS THE DESIGNED LOCATION. CONTRACTOR TO FIELD VERIFY THESE FEATURES PRIOR TO BIDDING AND DURING CONSTRUCTION.

File Path: P:\14132F\_Weber County\_Survey and ROW\1200\_South Ogden\Drawings\SEGMENT 3\Drainage Sheets\7500 W OUTFALL\_22SEP.dwg Aug 31, 2019 - 11:28am

NO.	DATE	DESCRIPTION

IF THE ABOVE SCALE BAR DOES NOT MEASURE 1-INCH IN LENGTH, DO NOT USE THIS DRAWING FOR SCALING PURPOSES. DIMENSIONS AND MEASUREMENTS SPECIFIED IN THE DRAWING TAKE PRECEDENCE TO SCALED MEASUREMENTS.

THE INFORMATION CONTAINED IN THIS DRAWING IS THE PROPERTY OF CRS ENGINEERS AND IS NOT TO BE REPRODUCED, MODIFIED OR USED FOR ANY OTHER PROJECT OR EXTENSION OF THIS PROJECT EXCEPT BY AGREEMENT WITH CRS ENGINEERS.

© 2017

PRINCIPAL  
**M. HIRST**

PROJECT MANAGER  
**M. PORTER**

CHECKED BY  
**B. JONES**

DRAWN BY  
**K. ACHTER**

DRAWING SCALE  
**AS SHOWN**

ISSUE DATE  
**AUGUST 30, 2019**

**CALDWELL RICHARDS SORENSEN**

ANSWERS TO INFRASTRUCTURE

**CRS**

FARMINGTON OFFICE:  
PO Box 280  
160 S MAIN, STE. 200  
FARMINGTON, UTAH 84025  
PHONE: 801.939.5565  
FAX: 801.359.4272  
www.crsengineers.com

**3 of 3**

WEBER COUNTY  
**12TH STREET CORRIDOR DESIGN**  
7500 WEST  
DRAINAGE PLAN & PROFILE

SHEETS ARE DRAWN ON A 22x34 SHEET; ANY REPRODUCTIONS MADE NOT AT THIS SIZE WILL NOT BE TO SCALE

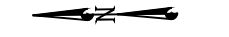
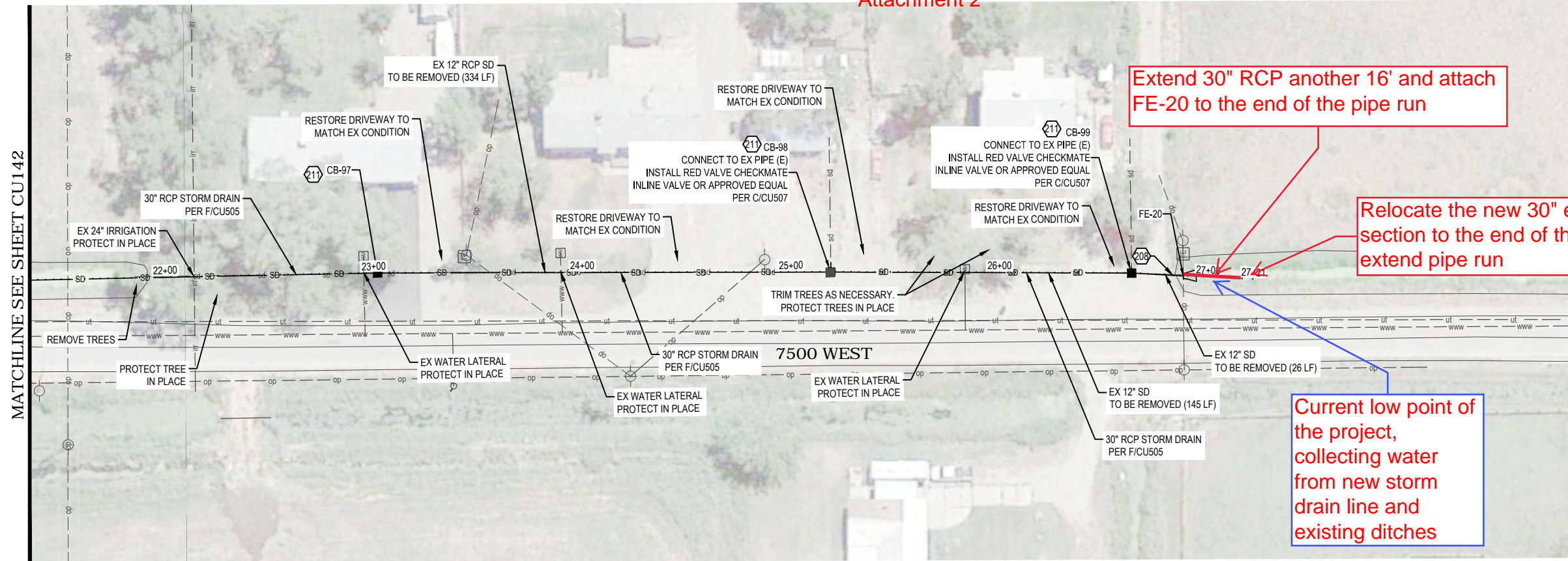
OGDEN, UT

PROJECT NUMBER  
**14132F**

SHEET  
**106** OF **153**

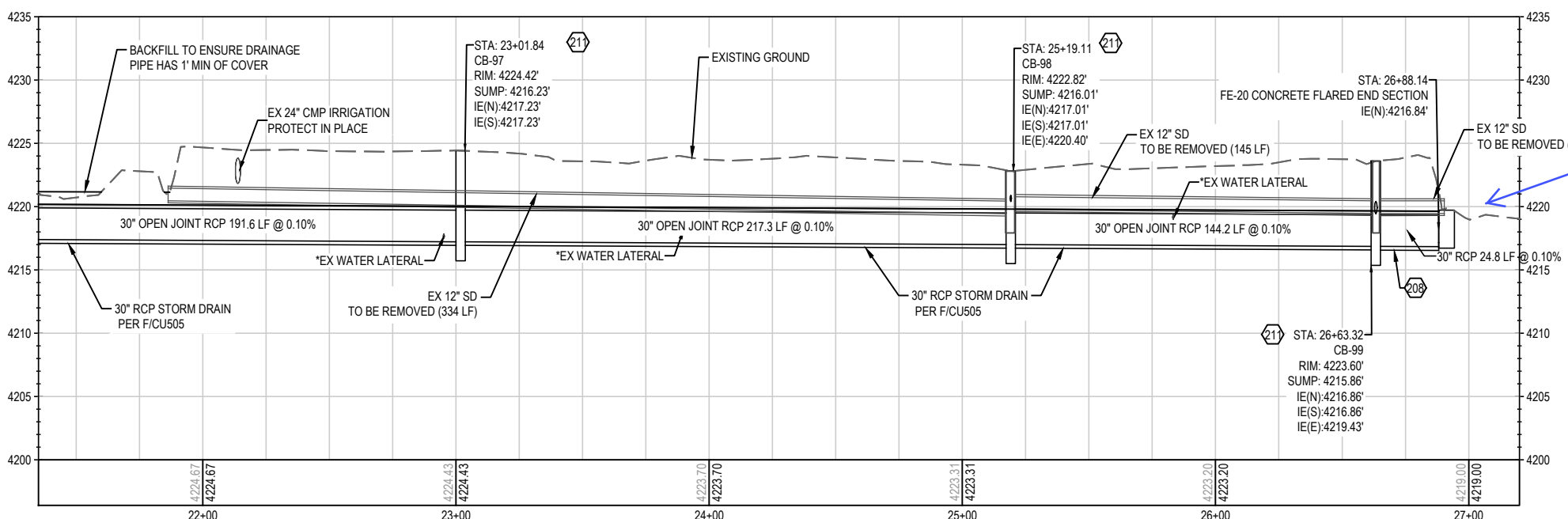
SHEET NUMBER  
**CU140**





**KEY NOTES**

- 201 15" RCP STORM DRAIN PER F/UCU505
- 202 15" HDPE STORM DRAIN PER F/UCU505
- 203 STORM DRAIN MANHOLE PER D/UCU505
- 204 3'x3' CONCRETE STORM DRAIN CATCH BASIN PER B/UCU505
- 205 12" RCP DRIVEWAY CULVERT PER B/UCU506
- 206 24" RCP STORM DRAIN PER E/UCU505
- 207 24" HDPE STORM DRAIN PER F/UCU505
- 208 30" RCP STORM DRAIN PER E/UCU505
- 209 30" HDPE STORM DRAIN PER F/UCU505
- 210 36" RCP STORM DRAIN PER E/UCU505
- 211 4'x4' CONCRETE STORM DRAIN CATCH BASIN PER A/UCU505
- 212 FLARED END SECTION PER G/UCU505
- 213 HEADWALL PER A/UCU506
- 214 CONNECT TO EX CATCH BASIN
- 215 RELOCATE WATER METER PER A/UCU507
- 216 RELOCATE FIRE HYDRANT PER B/UCU507
- 217 18" RCP IRRIGATION PER B/UCU508
- 218 24" RCP IRRIGATION PER B/UCU508
- 219 30" RCP IRRIGATION PER B/UCU508
- 220 30" HDPE IRRIGATION PER B/UCU508
- 221 IRRIGATION DIVERSION BOX PER A/UCU508
- 222 DRAINAGE DITCH PER D/UCU507
- 223 4'x4' CONCRETE STORM DRAIN CATCH BASIN PER A/UCU505
- 224 RAISE EX CATCH BASIN TO GRADE  
PIPE ELEVATION ESTIMATED.  
CONTRACTOR SHALL VERIFY SIZE AND DEPTH. IF CONFLICT ENCOUNTERED, CONTACT ENGINEER.



The flowline of the existing ditch is higher than the new outlet of the new drainage line causing water to backup and pond in this area

**UTILITY LEGEND**

- W PROPOSED WBW WATERLINE
- IRR PROPOSED IRRIGATION LINE
- SD PROPOSED STORM DRAIN
- PROPOSED EDGE OF ASPHALT
- PROPOSED DITCH
- RW RIGHT OF WAY LINE
- wbw EX WEBER BASIN WATER
- www EX WEST WARREN WATER
- bctv EX BURIED CABLE TV
- fo EX FIBER OPTIC
- g EX GAS LINE
- irr EX IRRIGATION LINE
- op EX OVERHEAD POWER
- sd EX STORM DRAIN
- ut EX UNDERGROUND TELEPHONE
- WM WATER METER

NOTE:  
SOME EXISTING CONDITIONS INCLUDING CUT/FILL LINES, STORM DRAIN FEATURES, WATER METERS, AND FIRE HYDRANTS ARE CURRENTLY BEING RELOCATED. DESIGN MODIFICATIONS MAY HAVE BEEN MADE DURING CONSTRUCTION. LOCATION SHOWN ON PLAN IS THE DESIGNED LOCATION. CONTRACTOR TO FIELD VERIFY THESE FEATURES PRIOR TO BIDDING AND DURING CONSTRUCTION.

File Path: P:\14132F\_Weber County-Survey and ROW\1200 South Ogden\Drawings\SEGMENT 3\Drainage Sheets\7500 W OUTFALL 22SEP.dwg Aug 31, 2019 - 11:38am

NO.	DATE	DESCRIPTION

IF THE ABOVE SCALE BAR DOES NOT MEASURE 1-INCH IN LENGTH, DO NOT USE THIS DRAWING FOR SCALING PURPOSES. DIMENSIONS AND MEASUREMENTS SPECIFIED IN THE DRAWING TAKE PRECEDENCE TO SCALED MEASUREMENTS.  
THE INFORMATION CONTAINED IN THIS DRAWING IS THE PROPERTY OF CRS ENGINEERS AND IS NOT TO BE REPRODUCED, MODIFIED OR USED FOR ANY OTHER PROJECT OR EXTENSION OF THIS PROJECT EXCEPT BY AGREEMENT WITH CRS ENGINEERS.  
© 2017

PRINCIPAL: M. HIRST  
PROJECT MANAGER: M. PORTER  
CHECKED BY: B. JONES  
DRAWN BY: K. ACHTER  
DRAWING SCALE: AS SHOWN  
ISSUE DATE: AUGUST 30, 2019

**CALDWELL RICHARDS SORENSEN**  
ANSWERS TO INFRASTRUCTURE

FARMINGTON OFFICE:  
PO Box 280  
160 S MAIN, STE. 200  
FARMINGTON, UTAH 84025  
PHONE: 801.939.5565  
FAX: 801.359.4272  
www.crsengineers.com

1 of 1

WEBER COUNTY  
12TH STREET CORRIDOR DESIGN  
7500 WEST  
DRAINAGE PLAN & PROFILE

SHEETS ARE DRAWN ON A 22x34 SHEET; ANY REPRODUCTIONS MADE NOT AT THIS SIZE WILL NOT BE TO SCALE

OGDEN, UT

PROJECT NUMBER: 14132F  
SHEET: 109 OF 153  
SHEET NUMBER: CU143

Attachment 3

Staker Parson Materials & Construction  
A CRH Company



**STAKER PARSON**  
MATERIALS & CONSTRUCTION  
A CRH COMPANY

Ogden - 2350 S. 1900 W. Ogden, UT 84401 | P: (801) 731-1111 F: (801) 731-8800  
Brigham City - PO Box 517 Brigham City, UT 84302 | P: (435) 723-5216 F: (435) 723-9343  
Smithfield - PO Box 65 Smithfield, UT 84335 | P: (435) 563-3242 F: (435) 563-9480

*The Preferred Source for quality sand, rock, landscape products,  
ready mix concrete, asphalt, paving & construction services.*

<b>To:</b> Stanley Consultants, Inc.	<b>Contact:</b> Brandon Fenton
<b>Address:</b> 6975 Union Park Ave,, Suite 300 Cottonwood Heights, UT 84047	<b>Phone:</b> (801) 293-8880
	<b>Fax:</b>
<b>Project Name:</b> 12th Street Segment 3 Additional 30" RCP	<b>Bid Number:</b>
<b>Project Location:</b> 7500 West, Ogden, UT	<b>Bid Date:</b> 3/26/2020

**JOB SPECIFICATION AND PRICE:**

**(IF UNIT PRICES ARE QUOTED, UNITS WILL BE MEASURED ON COMPLETION AND INVOICED AT UNIT PRICES QUOTED).**

**IF OWNER ELECTS TO EXECUTE OWN CONTRACT AGREEMENT, THIS PROPOSAL IS TO BECOME PART OF AND ATTACHED TO OWNERS CONTRACT**

Line #	Item #	Item Description	Estimated Quantity	Unit	Unit Price	Total Price
	1	Add Additional 16 LF Of 30" RCP At South End Of Storm Drain	1.00	LS	\$4,028.00	\$4,028.00
	2	Traffic Control Required To Install Additional 30" RCP. A) 2 Flaggers For 10 Hrs	1.00	LS	\$840.00	\$840.00
<b>Total Price for above Items:</b>						<b>\$4,868.00</b>

**Total Bid Price: \$4,868.00**

**Notes:**

- Additional work and work in excess of that specified and described above will be handled as a Change Order. Additional work **MUST BE APPROVED** by owner and contractor prior to construction.
- Bid includes only the items as specified and described above.

**Payment Terms:**

Refer to attached Terms & Conditions. Please note\*\*\*Effective March 1, 2019, payment by credit card will no longer be allowed on Construction Service Invoices\*\*\*

<p><b>ACCEPTED:</b> The above prices, specifications and conditions are satisfactory and are hereby accepted.</p> <p><b>Buyer:</b> _____</p> <p><b>Signature:</b> _____</p> <p><b>Date of Acceptance:</b> _____</p>	<p><b>CONFIRMED:</b> <b>STAKER   PARSON COMPANIES</b></p> <p><b>Authorized Signature:</b> _____</p> <p><b>Estimator:</b> Jeff Davis (801) 409-2483 jeff.davis@stakerparson.com</p>
---	--







## Direct Cost Totals

	Amount	Percent of Direct Cost
<b>Labor:</b>	\$692.35	15.15%
<b>Equipment Owned:</b>	\$40.00	0.88%
<b>Equipment Rented:</b>	\$0.00	0.00%
<b>Materials Owned:</b>	\$0.00	0.00%
<b>Materials Purchased:</b>	\$0.00	0.00%
<b>Subcontracted:</b>	\$3,836.17	83.97%
<b>Trucking Owned:</b>	\$0.00	0.00%
<b>Trucking Hired:</b>	\$0.00	0.00%
<b>Miscellaneous:</b>	\$0.00	0.00%
<b>Plug:</b>	\$0.00	0.00%
<b>Direct Cost:</b>	<u>\$4,568.52</u>	

## Pay Item Summary

	Amount	Percent of Bid Price
<b>Total Direct Cost:</b>	\$4,568.52	93.85%
<b>Total DC Adds/Cuts:</b>	\$0.00	0.00%
<b>Total Indirect Cost:</b>	\$0.00	0.00%
<b>Total Bond:</b>	\$0.00	0.00%
<b>Total Overall Cost:</b>	\$4,568.52	93.85%
<b>Total Overhead:</b>	\$0.00	0.00%
<b>Total Profit:</b>	\$299.48	6.15%
<b>Total Margin:</b>	\$299.48	6.15%
<b>Total Bid Price:</b>	<u>\$4,868.00</u>	

# Attachment 3



**BHI Construction**  
12th Street Corridor, Segment 3

## CONTRACTOR'S - NOTICE OF CHANGE

The Contractor asserts that the change described below will result in a cost and/or time adjustment to the contract

**COR #:** 3  
**DATE:** 3/19/2020

**CONTRACTOR:** BHI Construction  
**ADDRESS:** 1625 Wall Ave, Ogden Utah  
**TELEPHONE:** 801-695-6560 **FAX:** \_\_\_\_\_ **E-MAIL:** [Mcottle@bhico.com](mailto:Mcottle@bhico.com)

**This Change was initiated via:**     RFI Response     Submittal Comments     Field Order     Design/Plan Error  
 Instructional Bulletin     Owner Requested Change     Field Observation Report     Unforeseen Site Conditions

**Date Initiating Document was Received:** \_\_\_\_\_

DESCRIPTION:	Qty	UM	Unit Cost	Total
1) 200 Class Trackhoe #1 with Operator	5	HR	\$ 134.78	\$ 673.90
2) 200 Class Trackhoe #2 with Operator	4	HR	\$ 134.78	\$ 539.12
3) 200 Class Trackhoe #1 Idling (No Charge)	4	HR	\$ -	\$ -
4) 200 Class Trackhoe #2 Idling (No Charge)	4	HR	\$ -	\$ -
5) Trackhoe #1 Operator (Working as Pipelayer)	4	HR	\$ 38.89	\$ 155.56
6) Trackhoe #2 Operator (Working as Pipelayer)	4	HR	\$ 38.89	\$ 155.56
7) Loader with Operator	6	HR	\$ 117.39	\$ 704.34
8) Loader Idling (No Charge)	3	HR	\$ -	\$ -
9) Loader Operator (Working as Laborer)	3	HR	\$ 36.51	\$ 109.53
10) Laborer	9	HR	\$ 23.96	\$ 215.64
11) Pipe Layer	9	HR	\$ 25.70	\$ 231.30
12) Crew Utility Truck	5	HR	\$ 19.13	\$ 95.65

Materials	Units	UM	Unit Cost	Total
1) 30" RCP	16	LF	\$ 28.45	\$ 455.20
	0		\$ -	\$ -
	0		\$ -	\$ -

**Total Cost:** \$ 3,335.80  
**Overhead & Profit:15%** \$ 500.37  
**Proposed Change Order Cost:** \$ 3,836.17

**Estimate Attached:**  YES  NO

**Expected Delay to Critical Path Activities:**  YES  NO

**Number of Days Requested:** \_\_\_\_\_

**Justification**

**Response Required by Date:** \_\_\_\_\_

**Contractor / Design Builder Signature:** Mike Cottle  
Print Name Signature Date

**Engineer Signature:** \_\_\_\_\_  
Print Name Signature Date

**Owner Signature:** Jeff Davis  
Print Name Signature Date

**Disposition:**  Approved  Rejected **Date:** \_\_\_\_\_

**DISPOSITION (EXPLAIN):** \_\_\_\_\_ **Date of Response to this Notice:** \_\_\_\_\_



P.O. Box 12730  
Ogden, UT 84412

A CRH COMPANY

Telephone: 801-399-1171  
Fax.....: 801-392-7849

Attachment 3

INVOICE

<b>Remit to:</b>
Oldcastle Infrastructure P.O. Box 742387 Los Angeles, CA 90074-2387

Site: Ogden12th

SOLD TO:

B H, Inc.  
826 S 1500 E  
VERNAL, UT 84078 8609

SHIP TO:

12th Street Corridor Design  
West 12th street  
Mike Cottle 801.695.6560  
Jason 801.550.0  
Marriott-Slaterville City, UT 84404

Invoice No.	Date	Customer No.	Order No.	Customer PO	Delivery Terms	Mode of Delivery
210381678	1/13/2020	210002927	S159127	26160-0002	FOB Job Site	Logan #1

Packing slip(s) ...: SP353178

Qty	Unit	Item	Description	Mark	Unit Price	Amount
112.00	FT	3203900	Pipe 30" x 8' C76-CIII No Gasket **NO GASKETS** **NO GASKETS**	Item #2	28.45	3,186.40
					Tax	231.01

*BHI ordered 2 additional sticks (18 LF) of 30" RCP for the extension.  
The information above is for material unit pricing.*

TOTAL AMOUNT DUE BY: 02/27/20

US

3,417.41

Minimum 10% handling charge on all returned goods. No goods to be returned without consent. Give as reference our invoice number and date. Claims for damages, back charges for labor, other expenses, will not be allowed unless authorized in writing by the seller. The articles and/or services covered by this invoice were produced in compliance with the Federal Labor Standards Act of 1938, as amended. The Customer Agrees

1. THAT THE ABOVE TOTAL IS PAST DUE IF NOT PAID WITHIN 30 DAYS OF DATE OF THIS INVOICE.
2. TO PAY A FINANCE CHARGE OF 1.5% PER MONTH (18% PER ANNUM) ON ANY PAST DUE AMOUNT.
3. TO PAY COLLECTION COSTS, INCLUDING REASONABLE ATTORNEY FEES, AFTER DEFAULT BY THE CUSTOMER.



Attachment 3

## Crew Daily Ticket



Customer: STAKER PARSON  
 OSR: GARY NELSON  
 Location: 7500 WEST  
 BHI Job # 26160

Date: 1-17-20  
 PO #: —

### Work Performed

REMOVED FLARE END SECTION, INSTALLED TWO ADDITIONAL STICKS OF 30 INCH RCP. AFTER INSTALLING TWO STICKS WE RE-INSTALLED THE FLARE END SECTION. SPENT MOST OF THE FIRST PART OF THE DAY GETTING WATER UNDER CONTROL.

### Labor and Equipment

#	Description	Labor hrs RT	Labor hrs OT	Per-Diem	Equip hrs
1	OPERATOR AND 200 CLASS TRACKHOE	9			
2	OPERATOR AND 200 CLASS TRACKHOE	8			
3	OPERATOR AND LOADER	9			
4	PIPE LAYER	9			
5	LABORER	9			
6	CREW TRUCK				5
7					
8					
9					
10					
11					
12					
13					
14					
15					

### Materials

PO Number	Vendor	Description	QTY	UOM
—	OLD CASTLE	30" RCP	16	LF

### Subcontractors

PO Number	Subcontractor	Description	QTY	UOM

Approved: Gary B. Nelson

Signature: \_\_\_\_\_

Date: \_\_\_\_\_

## Attachment 3



### **Additional 30" Pipe & Flared End Section Description**

BHI was working near the tracks when we received the request from Weber County to extend the 30" storm drain line. We moved all equipment and plates to the south end of 7500 West. Removed the resident's driveway and dug back to remove the flared end section. The soil conditions at this location are very saturated due to being located at the low end of 7500 West. The county has not cleared the ditch running south from this point, this resulted in all water from the the newly installed storm drain line ponding at this location. BHI spent the first half of the day digging down to getting water under control. Set up two dams and plugged the line to set up bypass pumping around this location. Set up shoring and installed two additional sticks of 30" pipe and reinstalled flared end section. The communication line that was exposed and hanging across the trench is now protected and covered. Installed the resident's driveway access and graded around the flared end section.

Relocating the equipment, setting up the bypass pumping system, removing and installing the driveway are the major reasons for the cost going above the contract unit price. I have also attached a few pictures during the work.











Attachment 4

Staker Parson Materials & Construction  
A CRH Company



**STAKER PARSON**  
MATERIALS & CONSTRUCTION  
A CRH COMPANY

Ogden - 2350 S. 1900 W. Ogden, UT 84401 | P: (801) 731-1111 F: (801) 731-8800  
Brigham City - PO Box 517 Brigham City, UT 84302 | P: (435) 723-5216 F: (435) 723-9343  
Smithfield - PO Box 65 Smithfield, UT 84335 | P: (435) 563-3242 F: (435) 563-9480

*The Preferred Source for quality sand, rock, landscape products,  
ready mix concrete, asphalt, paving & construction services.*

<b>To:</b> Stanley Consultants, Inc.	<b>Contact:</b> Brandon Fenton
<b>Address:</b> 6975 Union Park Ave., Suite 300 Cottonwood Heights, UT 84047	<b>Phone:</b> (801) 293-8880
	<b>Fax:</b>
<b>Project Name:</b> 12th Street Segment 3 T&M For West Warren Water Conflicts	<b>Bid Number:</b>
<b>Project Location:</b> 7500 West, Ogden, UT	<b>Bid Date:</b> 3/31/2020

**JOB SPECIFICATION AND PRICE:**

**(IF UNIT PRICES ARE QUOTED, UNITS WILL BE MEASURED ON COMPLETION AND INVOICED AT UNIT PRICES QUOTED).**

**IF OWNER ELECTS TO EXECUTE OWN CONTRACT AGREEMENT, THIS PROPOSAL IS TO BECOME PART OF AND ATTACHED TO OWNERS CONTRACT**

Line #	Item #	Item Description	Estimated Quantity	Unit	Unit Price	Total Price
	1	T&M To Loop Water Services And Fire Hydrants On The West Warren Waterline. (See Attached T&M Sheets)	1.00	LS	\$11,784.00	\$11,784.00

**Total Price for above Items: \$11,784.00**

**Total Bid Price: \$11,784.00**

**Notes:**

- Additional work and work in excess of that specified and described above will be handled as a Change Order. Additional work **MUST BE APPROVED** by owner and contractor prior to construction.
- Bid includes only the items as specified and described above.

**Payment Terms:**

Refer to attached Terms & Conditions. Please note\*\*\*Effective March 1, 2019, payment by credit card will no longer be allowed on Construction Service Invoices\*\*\*

<p><b>ACCEPTED:</b> The above prices, specifications and conditions are satisfactory and are hereby accepted.</p> <p><b>Buyer:</b> _____</p> <p><b>Signature:</b> _____</p> <p><b>Date of Acceptance:</b> _____</p>	<p><b>CONFIRMED:</b> <b>STAKER   PARSON COMPANIES</b></p> <p><b>Authorized Signature:</b> _____</p> <p><b>Estimator:</b> Jeff Davis (801) 409-2483 jeff.davis@stakerparson.com</p>
---	--

# Attachment 4



**BHI Construction**  
12th Street Corridor, Segment 3

## CONTRACTOR'S - NOTICE OF CHANGE

The Contractor asserts that the change described below will result in a cost and/or time adjustment to the contract

COR #: 5

DATE: 3/19/2020

CONTRACTOR: BHI Construction  
 ADDRESS: 1625 Wall Ave, Ogden Utah  
 TELEPHONE: 801-695-6560 FAX:  E-MAIL: [Mcottle@bhico.com](mailto:Mcottle@bhico.com)

This Change was initiated via:  RFI Response  Submittal Comments  Field Order  Design/Plan Error  
 Instructional Bulletin  Owner Requested Change  Field Observation Report  Unforeseen Site Conditions

Date Initiating Document was Received: \_\_\_\_\_

DESCRIPTION:	Qty	UM	Unit Cost	Total
1) 200 Class Trackhoe #1 with Operator	17.5	HR	\$ 134.78	\$ 2,358.65
2) 200 Class Trackhoe #2 with Operator	6	HR	\$ 134.78	\$ 808.68
3) 200 Class Trackhoe #1 Idling (No Charge)	6	HR	\$ -	\$ -
4) 200 Class Trackhoe #2 Idling (No Charge)	11	HR	\$ -	\$ -
5) Trackhoe #1 Operator (Working as Pipelayer)	6	HR	\$ 38.89	\$ 233.34
6) Trackhoe #2 Operator (Working as Pipelayer)	11	HR	\$ 38.89	\$ 427.79
7) Loader with Operator	18.5	HR	\$ 117.39	\$ 2,171.72
8) Loader Idling (No Charge)	5	HR	\$ -	\$ -
9) Loader Operator (Working as Loberer)	5	HR	\$ 36.51	\$ 182.55
10) Laborer	14	HR	\$ 23.96	\$ 335.44
11) Pipe Layer	26	HR	\$ 25.70	\$ 668.20
12) Crew Utility Truck	12.75	HR	\$ 19.13	\$ 243.91

Materials	Units	UM	Unit Cost	Total
1) Water Service Parts (See Attached Invoice)	4	Each	\$ 152.14	\$ 608.56
2) Fire Hydrant Parts (See Attached Invoice)	2	Each	\$ 722.63	\$ 1,445.26
3) Concrete for Thrust Blocks	2	Yards	\$ 137.32	\$ 274.64
	0	LS	\$ -	\$ -

Total Cost: \$ 9,758.73  
 Overhead & Profit: 15% \$ 1,463.81  
 Proposed Change Order Cost: \$ 11,222.54

Estimate Attached:  YES  NO

Expected Delay to Critical Path Activities:  YES  NO

Number of Days Requested: \_\_\_\_\_

Justification  
 \_\_\_\_\_  
 \_\_\_\_\_  
 \_\_\_\_\_

Response Required by Date: \_\_\_\_\_

Contractor / Design Builder Signature: Mike Cottle  
 Print Name Signature Date

Engineer Signature: \_\_\_\_\_  
 Print Name Signature Date

Owner Signature: Jeff Davis  
 Print Name Signature Date

Disposition:  Approved  Rejected Date: \_\_\_\_\_

DISPOSITION (EXPLAIN): \_\_\_\_\_ Date of Response to this Notice: \_\_\_\_\_



Attachment 4  
INVOICE

Invoice # L830016  
Invoice Date 1/24/20  
Account # 220988  
Sales Rep ANDREW WAASDORP  
Phone # 801-621-6668  
Branch # 032 Ogden, UT  
Total Amount Due \$722.63

1830 Craig Park Court  
St. Louis, MO 63146

Remit To:  
CORE & MAIN LP  
PO BOX 28330  
ST LOUIS, MO 63146

268 1 MB Q.439 E0071 I0118 D5777314345 S2 P7089557 0002:0002



BH INC  
BRAD HASLAM  
826 S 1500 E  
VERNAL UT 84078-8609

Shipped to:  
900 W WEBER RIVER TO 7500 W.  
JASON 801-550-0004  
OGDEN, UT

CUSTOMER JOB- 26160 12TH ST SEG 3

Thank you for the opportunity to serve you! We appreciate your prompt payment.

Date Ordered	Date Shipped	Customer PO #	Job Name	Job #	Bill of Lading	Shipped Via	Invoice #
1/23/20	1/23/20	SEE BELOW	12TH ST SEG 3	26160		CORE & MAIN LP	L830016

**Materials for fire hydrant location 13+50**

Product Code	Description	Quantity		B/O	Price	UM	Extended Price
		Ordered	Shipped				
	CUSTOMER PO#- 26160-TNM-331418-75						
21IAMF7064006PBBI	6 PVC 4006P STARGRIP REST (I) W/BLUE B&N	2	2		46.32000	EA	92.64
211064M	6 MJ 45 C153 IMP	2	2		139.92000	EA	279.84
21AM06FABC	6" FOSTER ADPT 6FABC W/MJ ACC	1	1		159.90000	EA	159.90
J20614W	6 C900 DR14 PVC PIPE (G) 20' PC305	20	20		7.07000	FT	141.40

Visit [coreandmain.com](http://coreandmain.com) for a current W-9 form

**Online ADVANTAGE**

- Pay Online
- Paperless Billing
- Invoice Reprints
- Signed Delivery Receipts

Remit payment to the address shown on this invoice or access your account in Online Advantage to pay online.

Freight	Delivery	Handling	Restock	Misc.	Subtotal:	673.78
					Other:	0.00
					Tax:	48.85
					<b>Invoice Total:</b>	<b>\$722.63</b>

Terms: NET 30 Ordered By: JOSE

This transaction is governed by and subject to CORE & MAIN's standard terms and conditions, which are incorporated by reference and accepted. To review these terms and conditions, please visit: <http://tandc.coreandmain.com/>.





Attachment 4  
INVOICE

Invoice # L939864  
Invoice Date 2/19/20  
Account # 220988  
Sales Rep ANDREW WAASDORP  
Phone # 801-621-6668  
Branch # 032 Ogden, UT  
Total Amount Due \$498.84

1830 Craig Park Court  
St. Louis, MO 63146

Remit To:  
CORE & MAIN LP  
PO BOX 28330  
ST LOUIS, MO 63146

130 1 MB 0.439 E0105X I0192 D5865258021 S2 P7157921 0001:0003



Shipped to:

CUSTOMER PICK-UP -



BH INC  
BRAD HASLAM  
826 S 1500 E  
VERNAL UT 84078-8609

CUSTOMER JOB- 26160 12TH ST SEG 3

Thank you for the opportunity to serve you! We appreciate your prompt payment.

Date Ordered	Date Shipped	Customer PO #	Job Name	Job #	Bill of Lading	Shipped Via	Invoice #
2/18/20	2/18/20	26160-0000	12TH ST SEG 3	26160		WILL CALL	L939864

Product Code	Description	Quantity			Price	UM	Extended Price
		Ordered	Shipped	B/O			
211AMF7064006PBB1	6 PVC 4006P STARGRIP REST (I) W/BUE B&N	4	4		46.32000	EA	185.28
211064M	6 MJ 45 C153 IMP	2	2		139.92000	EA	279.84

*Hydrant Location - 3+60*

*BHI provided (1) 6" foster adapter and 20' stick of 6" PVC pipe from company stock.*

Payment for the 6" adapter and 6" PVC pipe will be paid for at the same rate as shown on Invoice L830016.

Visit [coreandmain.com](http://coreandmain.com)  
for a current W-9 form



Online  
ADVANTAGE

- Pay Online
- Paperless Billing
- Invoice Reprints
- Signed Delivery Receipts

Remit payment to the address shown on this invoice or access your account in Online Advantage to pay online.

Freight	Delivery	Handling	Restock	Misc.	Subtotal:	465.12
					Other:	0.00
					Tax:	33.72
					Invoice Total:	\$498.84

Terms: NET 30

Ordered By: JOSE

This transaction is governed by and subject to CORE & MAIN's standard terms and conditions, which are incorporated by reference and accepted. To review these terms and conditions, please visit: <http://tandc.coreandmain.com/>.



Attachment 4  
INVOICE

Invoice # L768136  
Invoice Date 1/13/20  
Account # 220988  
Sales Rep ANDREW WAASDORP  
Phone # 801-621-6668  
Branch # 032 Ogden, UT  
Total Amount Due \$152.14

1830 Craig Park Court  
St. Louis, MO 63146

Remit To:  
CORE & MAIN LP  
PO BOX 28330  
ST LOUIS, MO 63146



172 1 MB 0.428 E0135X I0221 D5740939983 S2 P7062431 0001:0001



BH INC  
BRAD HASLAM  
826 S 1500 E  
VERNAL UT 84078-8609

Shipped to:

CUSTOMER PICK-UP -

CUSTOMER JOB- 26160 12TH ST SEG 3

Thank you for the opportunity to serve you! We appreciate your prompt payment.

Date Ordered 1/10/20 Date Shipped 1/10/20 Customer PO # SEE BELOW Job Name 12TH ST SEG 3 Job # 26160 Bill of Lading WILL CALL Shipped Via WILL CALL Invoice # L768136

**Invoice for materials at 1010 S 7500 W. This pricing will be applied to all locations.**

Product Code	Description	Quantity			Price	UM	Extended Price
		Ordered	Shipped	B/O			
	CUSTOMER PO#- 26160-331418-75						
3910C6644QNL	C66-44QNL 1 CPLG QJ(PE) (NO LEAD)	2	2		64.29000 EA	128.58	
391012I5372	INSERT-53-72 SS INSERT 1-1/4 CTS/1 IPS	4	4		3.32000 EA	13.28	

**WWWID provided 6 couplings and 12 inserts to be installed at the below locations.**  
- 1145 S 7500 W  
- 1290 S 7500 W  
- 960 S 7500 W

Each waterline service loop location used these same items on this invoice. Most of the items used on the project were from the contractor's stocked material so no invoices are available. The prices on this invoice will be used for all the items for each waterline service loop.

Randy Giordano

Visit [coreandmain.com](http://coreandmain.com)  
for a current W-9 form



Online  
ADVANTAGE

- Pay Online
- Paperless Billing
- Invoice Reprints
- Signed Delivery Receipts

Remit payment to the address shown on this invoice or access your account in Online Advantage to pay online.

Freight	Delivery	Handling	Restock	Misc.	Subtotal:	141.86
					Other:	0.00
					Tax:	10.28
					Invoice Total:	\$152.14

Terms: NET 30

Ordered By: JASON

This transaction is governed by and subject to CORE & MAIN's standard terms and conditions, which are incorporated by reference and accepted. To review these terms and conditions, please visit: <http://tandc.coreandmain.com/>.



Attachment 4

Crew Daily Ticket



Customer: STAKER PARSON  
 OSR: GARY NELSON  
 Location: 7500 WEST  
 BHI Job #: 26160

Date: 1-10-20  
 PO #: \_\_\_\_\_

Work Performed

- LOOPED WATER SERVICE AT 1010 SOUTH 7500 WEST
- SERVICE NEEDED TO BE DROPPED DOWN ONE FOOT. INSTALLED COMPRESSION COUPLING, BACKFILLED, AND COMPACTED.

Labor and Equipment

#	Description	Labor hrs RT	Labor hrs OT	Per-Diem	Equip hrs
1	OPERATOR + 200 CLASS TRACKHOE	2			
2	OPERATOR + 200 CLASS TRACKHOE	2			
3	OPERATOR + LOADER	2			
4	PIPE LAYER	2			
5	CREW TRUCK				1
6					
7					
8					
9					
10					
11					
12					
13					
14					
15					

Materials

PO Number	Vendor	Description	QTY	UOM
		COMPRESSION FITTINGS	2	
		INSERTS	4	

Subcontractors

PO Number	Subcontractor	Description	QTY	UOM

Approved: Gary Nelson

Signature: \_\_\_\_\_

Date: \_\_\_\_\_

**Attachment 4  
Crew Daily Ticket**



Customer: STAKER PARSON  
 OSR: GARY NELSON  
 Location: 7500 WEST  
 BHI Job # 26160

Date: 1-23-20  
 PO #: \_\_\_\_\_

**Work Performed**

- LOOPEO FIRE HYDRANT AT 13+50  
 - HYDRANT WAS FOUR TENTHS INTO THE 6D LINE. INSTALLED TWO 45' BENDS, FOSTER ADAPTER, AND SET NEW SIX FOOT HYDRANT.

**Labor and Equipment**

#	Description	Labor hrs RT	Labor hrs OT	Per-Diem	Equip hrs
1	OPERATOR + 200 CLASS TRACKHOE	4			
2	OPERATOR + 200 CLASS TRACKHOE	4			
3	OPERATOR + LOADER	4			
4	PIPE LAYER	4			
5	LABORER	4			
6	LABORER	4			
7	CREW TRUCK				2
8					
9					
10					
11					
12					
13					
14					
15					

**Materials**

PO Number	Vendor	Description	QTY	UOM
		SEE ATTACHED INVOICE		

**Subcontractors**

PO Number	Subcontractor	Description	QTY	UOM

Approved: Gary Nelson

Signature: \_\_\_\_\_

Date: \_\_\_\_\_



**Attachment 4  
Crew Daily Ticket**



Customer: STAKER PARSON  
 OSR: GARY NELSON  
 Location: 7500 WEST  
 BHI Job # 26160

Date: 1-24-20  
 PO # : \_\_\_\_\_

**Work Performed**

- FIRE HYDRANT NEEDED TO BE ADJUSTED AT 13+50
- PREPARED FOR POURING THRUST BLOCK
- INSTALLED GRAVEL, BACKFILLED, AND COMPACTED

**Labor and Equipment**

#	Description	Labor hrs RT	Labor hrs OT	Per-Diem	Equip hrs
1	OPERATOR + 200 CLASS TRACKHOE	2			
2	OPERATOR + 200 CLASS TRACKHOE	2			
3	OPERATOR + LOADER	2			
4	PIPE LAYER	2			
5	LABORER	2			
6	LABORER	2			
7	CREW UTILITY TRUCK				1
8					
9					
10					
11					
12					
13					
14					
15					

**Materials**

PO Number	Vendor	Description	QTY	UOM
	STAKER PARSON	CONCRETE	1/2	YARD

**Subcontractors**

PO Number	Subcontractor	Description	QTY	UOM

Approved: Gary Nelson

Signature: \_\_\_\_\_

Date: \_\_\_\_\_

Attachment 4

Crew Daily Ticket



Customer: STAKER PARSON  
 OSR: GARY NELSON  
 Location: 7500 WEST  
 BHI Job # 26160

Date: 1-27-20  
 PO #: \_\_\_\_\_

Work Performed

- ADJUSTED WATER LOOP AT 1145 SOUTH 7500 WEST  
 - DUE TO THE HIGH WATER TABLE AND MUDDY CONDITIONS AROUND THE SERVICE. THIS TOOK TWO HOURS FOR THE ENTIRE CREW.

Labor and Equipment

#	Description	Labor hrs RT	Labor hrs OT	Per-Diem	Equip hrs
1	OPERATOR + 200 CLASS TRACKHOE	2			
2	OPERATOR + 200 CLASS TRACKHOE	2			
3	OPERATOR + LOADER	2			
4	PIPE LAYER	2			
5	LABORER	2			
6	CREW TRUCK				1
7					
8					
9					
10					
11					
12					
13					
14					
15					

Materials

PO Number	Vendor	Description	QTY	UOM

Subcontractors

PO Number	Subcontractor	Description	QTY	UOM
		COMPRESSION FITTINGS	2	EACH
		INSERTS	4	EACH

Approved: Gary Nelson

Signature: \_\_\_\_\_

Date: \_\_\_\_\_



Attachment 4

Crew Daily Ticket



Customer: STAKER PARSON  
 OSR: GARY NELSON  
 Location: 7500 WEST  
 BHI Job #: 26160

Date: 2-7-20  
 PO #:     

Work Performed

- LOOPED WATER SERVICE AT 1290 SOUTH 3500 WEST  
 - LOOPED SERVICE UNDER 30 INCH RCP STORM DRAIN LINE.

Labor and Equipment

#	Description	Labor hrs RT	Labor hrs OT	Per-Diem	Equip hrs
1	OPERATOR + 200 CLASS TRACKHOE	2			
2	OPERATOR + 200 CLASS TRACKHOE	2			
3	OPERATOR + LOADER	2			
4	PIPE LAYER	2			
5	LABORER	2			
6	CROW UTILITY TRUCK				1
7					
8					
9					
10					
11					
12					
13					
14					
15					

Materials

PO Number	Vendor	Description	QTY	UOM
		COMPRESSION FITTING	2	EACH
		INSERTS	4	EACH

Subcontractors

PO Number	Subcontractor	Description	QTY	UOM

Approved: Gary Nelson

Signature: \_\_\_\_\_

Date: \_\_\_\_\_



Attachment 4

Crew Daily Ticket



Customer: STAKER PARSON  
 OSR: GARY NELSON  
 Location: 960 SOUTH 7500 WEST  
 BHI Job # 26160 - 12TH STREET

Date: 2-12-20  
 PO #: \_\_\_\_\_

Work Performed

- LOOPED WATER SERVICE AT 960 SOUTH 7500 WEST  
 - SERVICE NEEDED TO BE LOOPED. INSTALLED COMPRESSION COUPLINGS, BACKFILLED, AND COMPACTED.

Labor and Equipment

#	Description	Labor hrs RT	Labor hrs OT	Per-Diem	Equip hrs
1	OPERATOR + 200 CLASS TRACKHOE	1.5			
2	PIPE LAYER	1.5			
3	CREW TRUCK				.75
4	OPERATOR + LOADER	1.5			
5					
6					
7					
8					
9					
10					
11					
12					
13					
14					
15					

Materials

PO Number	Vendor	Description	QTY	UOM
		COMPRESSION FITTINGS	2	
		INSERTS	4	

Subcontractors

PO Number	Subcontractor	Description	QTY	UOM

Approved: Gary R Nelson

Signature: \_\_\_\_\_

Date: \_\_\_\_\_



Attachment 4

Crew Daily Ticket



Customer: STAKER PARSON  
 OSR: GARY NELSON  
 Location: 1145 SOUTH 7500 WEST  
 BHI Job # 26160 - 12TH STREET

Date: 2-14-20  
 PO #: \_\_\_\_\_

Work Performed

WATER SERVICE WAS LEAKING AT THE MAIN. RANDY SUPPLIED PARTS FOR BHI TO INSTALL NEW SERVICE FROM MAIN TO THE METER. OLD FITTING AT THE MAIN WOULD NOT STOP LEAKING AFTER IT WAS ADJUSTED.

Labor and Equipment

#	Description	Labor hrs RT	Labor hrs OT	Per-Diem	Equip hrs
1	OPERATOR + 200 CLASS TRACKHOE	5			
2	OPERATOR + LOADER	5			
3	PIPELAYER	5			
4	CREW TRUCK				2.5
5					
6					
7					
8					
9					
10					
11					
12					
13					
14					
15					

Materials

PO Number	Vendor	Description	QTY	UOM
	WEST WARREN WATER	RANDY WITH WWW.WID SUPPLIED ALL MATERIALS (SADDLE, CORP, POLLY)		

Subcontractors

PO Number	Subcontractor	Description	QTY	UOM

Approved: Gary R. Nelson

Signature: \_\_\_\_\_

Date: \_\_\_\_\_



Crew Daily Ticket



Customer: STAKER PARSON  
 OSR: GARY ANDERSON  
 Location: 7500 W  
 BHI Job # 26160 - 12TH STREET

Date: 2-18-20  
 PO # : \_\_\_\_\_

Work Performed

- FIRE HYDRANT INSTALLATION AT 3+60  
 - INSTALLED ALL MATERIALS AS LISTED BELOW.

Labor and Equipment

#	Description	Labor hrs RT	Labor hrs OT	Per-Diem	Equip hrs
1	OPERATOR + 2000 CLASS TRACKHOE	5			
2	OPERATOR + 2000 CLASS TRACKHOE	5			
3	OPERATOR + LOADER	5			
4	PIPELAYER	5.5			
5	CREW TRUCK				2.5
6					
7					
8					
9					
10					
11					
12					
13					
14					
15					

Materials

PO Number	Vendor	Description	QTY	UOM
		45' BEND	2	EACH
		BOLT PACK 6"	4	EACH
		6" FOSTER ADAPTER	1	EACH
		6" C100 DRY	20	LF
		CONCRETE	1/2	YARD

Subcontractors

PO Number	Subcontractor	Description	QTY	UOM

Approved: Gary R. Nelson

Signature: \_\_\_\_\_

Date: \_\_\_\_\_