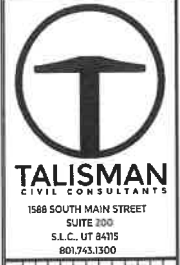
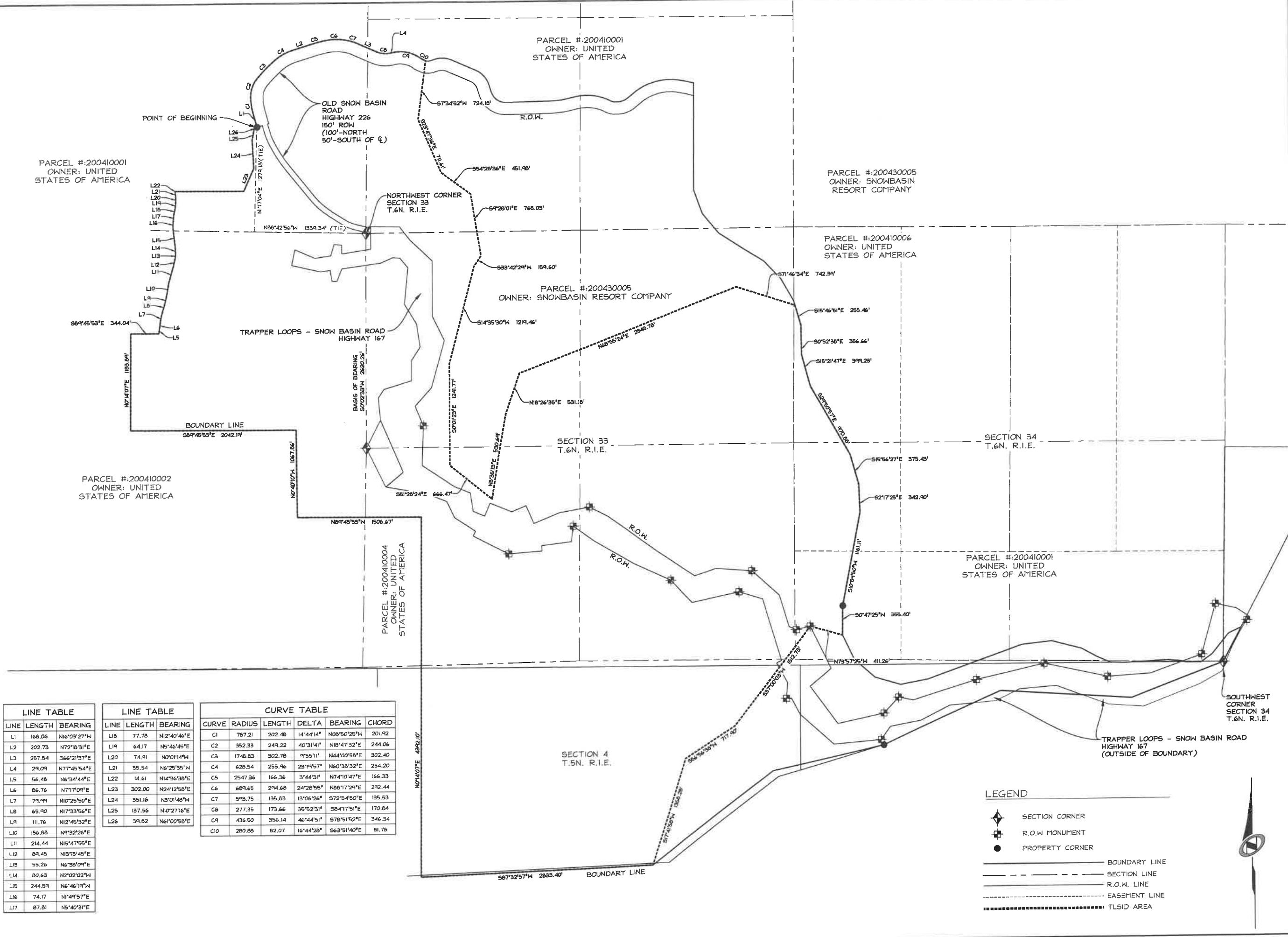


10/25/2021 12:52 PM



REVISIONS	
DATE	
BY	
NO.	

SNOWBASIN TRAPPERS LOOP IMPROVEMENT DISTRICT
 WEBER, COUNTY
 DATE SUBMITTED: 2021-10-25
 TCC JOB NUMBER: 19-300



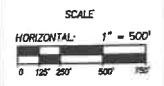
LINE	LENGTH	BEARING
L1	168.06	N16°03'27"W
L2	202.73	N72°18'31"E
L3	257.54	S66°21'57"E
L4	29.09	N77°45'54"E
L5	56.48	N6°34'44"E
L6	86.76	N71°09'09"E
L7	79.99	N10°25'50"E
L8	65.90	N17°33'56"E
L9	111.76	N12°45'32"E
L10	156.88	N9°32'26"E
L11	214.44	N15°47'55"E
L12	89.45	N13°15'45"E
L13	55.26	N6°38'09"E
L14	80.63	N2°02'02"W
L15	244.59	N6°46'19"W
L16	74.17	N1°49'57"E
L17	87.81	N5°40'51"E

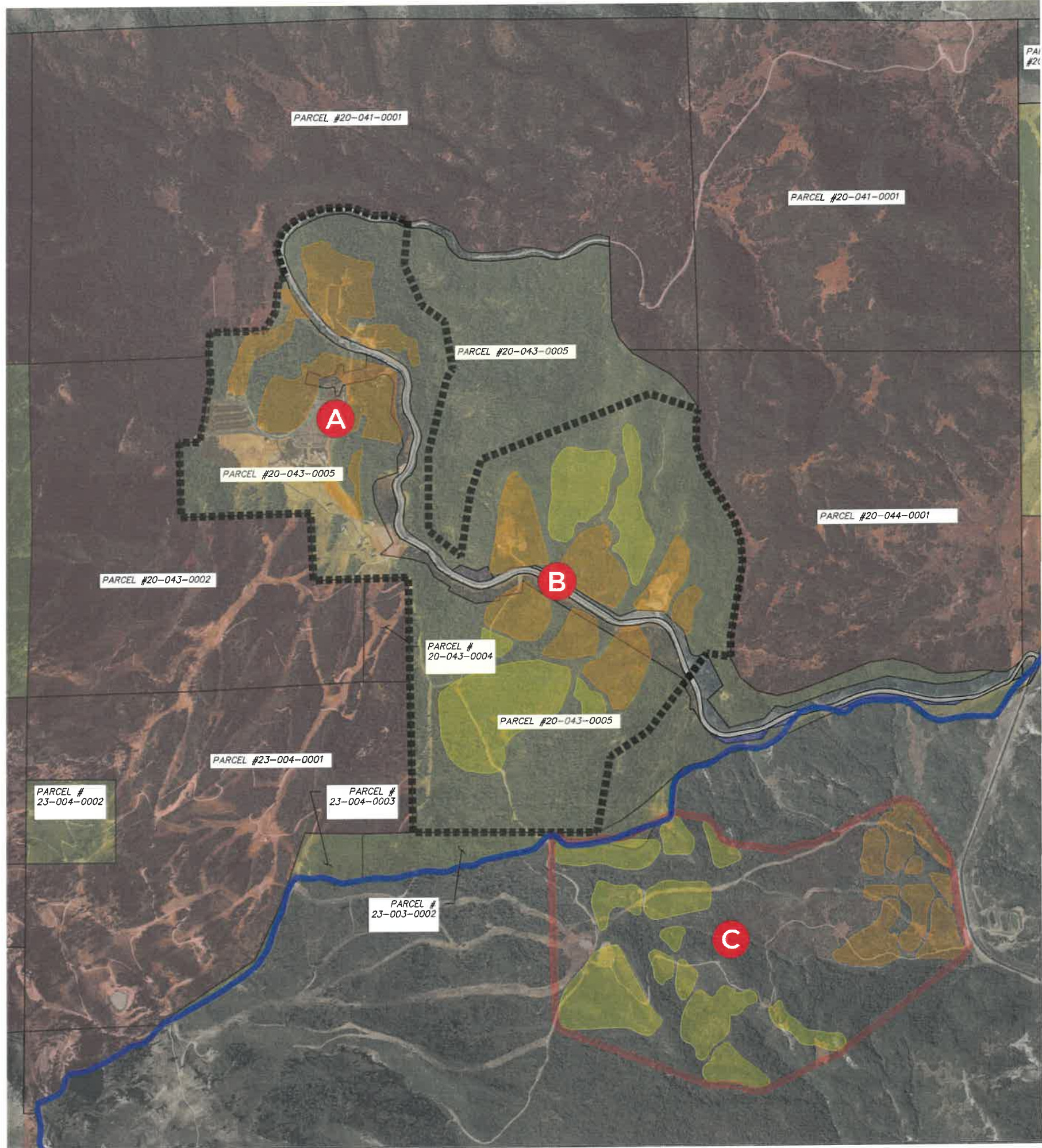
LINE	LENGTH	BEARING
L18	77.78	N12°40'46"E
L19	64.17	N5°46'45"E
L20	74.91	N0°01'14"W
L21	55.54	N6°25'35"W
L22	14.61	N14°36'38"E
L23	302.00	N24°12'58"E
L24	351.16	N3°01'48"W
L25	137.56	N10°27'16"E
L26	39.82	N6°10'58"E

CURVE	RADIUS	LENGTH	DELTA	BEARING	CHORD
C1	787.21	202.48	14°44'14"	N08°50'25"W	201.92
C2	352.33	249.22	40°31'41"	N18°47'32"E	244.06
C3	1748.83	302.78	9°55'11"	N44°00'58"E	302.40
C4	628.54	255.96	23°19'57"	N60°38'32"E	254.20
C5	2547.36	166.36	3°44'31"	N74°10'47"E	166.33
C6	689.65	294.68	24°28'55"	N08°17'29"E	292.44
C7	598.75	135.83	13°06'26"	S72°54'50"E	135.53
C8	277.35	173.66	35°52'31"	S84°17'51"E	170.84
C9	436.50	356.14	46°44'51"	S78°51'52"E	346.34
C10	280.88	82.07	16°44'28"	S63°51'40"E	81.78

LEGEND

- ◆ SECTION CORNER
- ⊕ R.O.W MONUMENT
- PROPERTY CORNER
- BOUNDARY LINE
- - - SECTION LINE
- R.O.W. LINE
- - - EASEMENT LINE
- TLSID AREA





LEGEND

- A DEVELOPMENT AREAS
- WEBER/MORGAN COUNTY BOUNDARY
- DEVELOPMENT AREA BOUNDARIES
- PROPOSED TLID BOUNDARY

PARCEL OWNERSHIP

- FEDERAL/STATE PARCEL
- PRIVATE PARCEL
- SNOWBASIN PARCEL
- UNDEFINED PARCEL

SNOWBASIN FUTURE LAND USE

- MUTLI-FAMILY
- SINGLE FAMILY
- MIXED USE

REV.	DATE	BY	NO.

PROPOSED BOUNDARY
TRAPPERS LOOP IMPROVEMENT DISTRICT
SNOWBASIN RESORT

TCC JOB NUMBER: 19-300-06 DATE: 10.06.2021

SCALE
HORIZONTAL 1" = 800'

SHEET NUMBER
TLID
1 OF 1