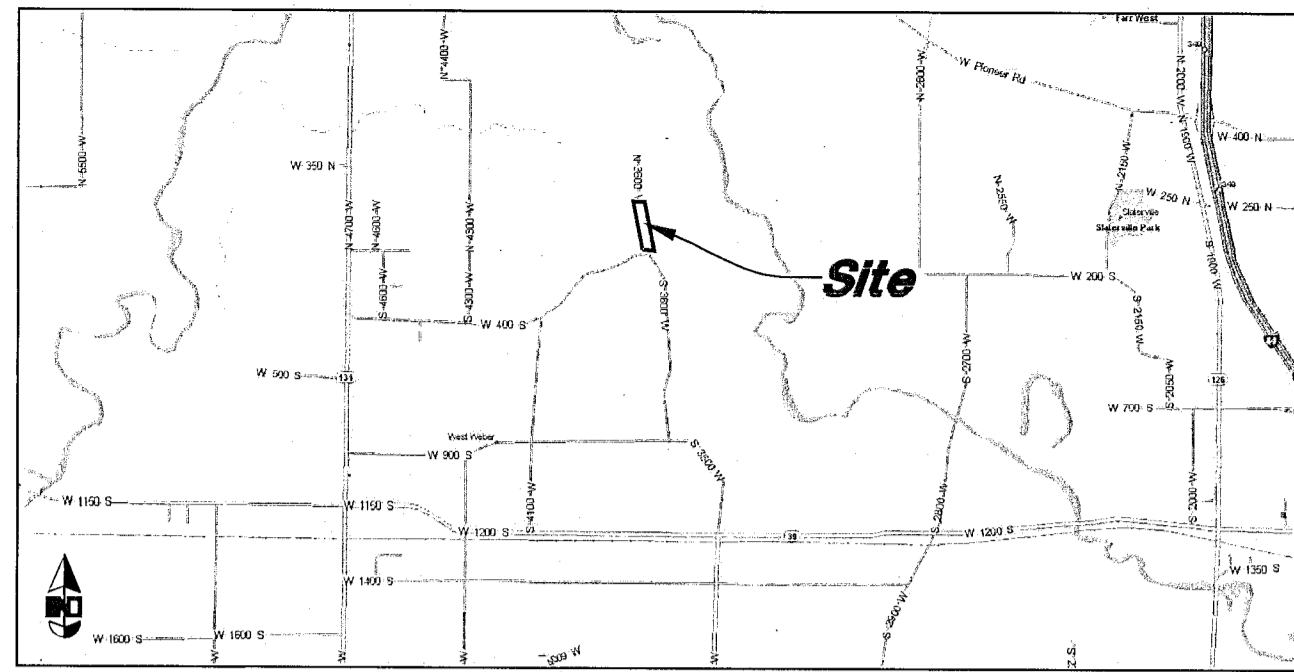


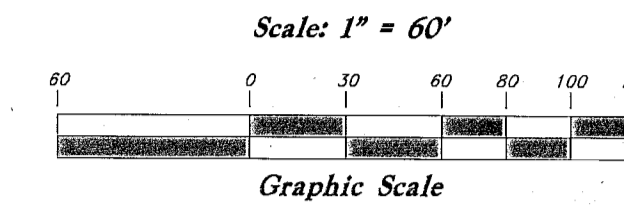
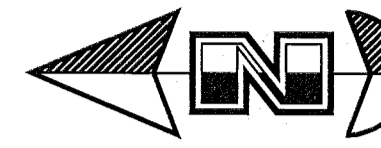
3600 West Road Dedication 2017 - 01 Corrected

A part of Lot 1, Section 16, T6N, R2W, SLB&M, U.S. Survey
Weber County, Utah



VICINITY MAP
Not to Scale

- Legend**
- Monument to be set
 - (Rad.) Radial Line
 - (N/R) Non-Radial Line
 - PUE Public Utility Easement
 - PU&DE Public Utility & Drainage Easement
 - Fence
 - Section Line
 - Deed Lines
- Set 5/8" x 24" Long Rebar & Cap w/ Lathe

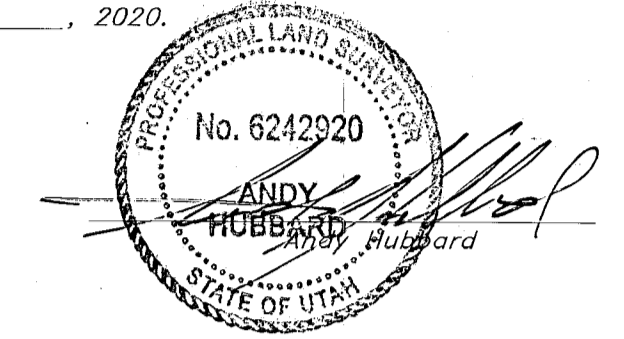


SURVEYOR'S CERTIFICATE

I, Andy Hubbard, do hereby certify that I am a Professional Land Surveyor in the State of Utah, and that I hold Certificate No. 6242920 in accordance with Title 58, Chapter 22, of the Professional Engineers and Land Surveyors Licensing Act. I also certify that I have completed a survey of the property described herein in accordance with Section 17-23-17 and that I have verified all measurements shown herein this plat of 3600 West Road Dedication 2017 - 01 Corrected in Weber County, Utah and that it has been correctly drawn to the designated scale and is a true and correct representation of the following description of lands included in said subdivision, based on data compiled from records in the Weber County Recorder's Office. Monuments have been found or placed as represented on this plat. I furthermore certify that all lots within this Subdivision hereby meet all current lot width and area requirements of the Weber County Zoning Ordinance.

Signed this 20th day of June, 2020.

6242920
License No.



OWNERS DEDICATION

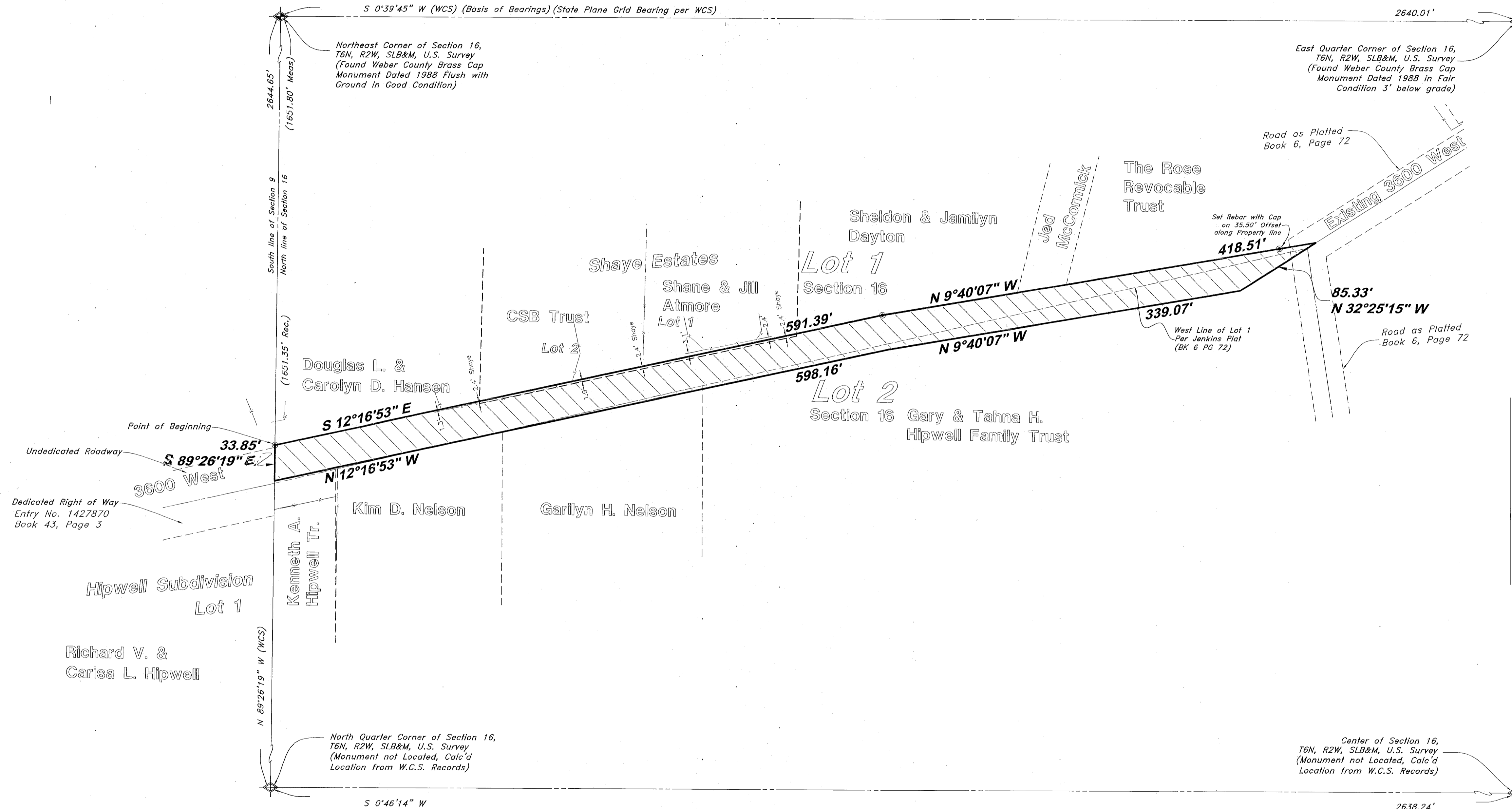
I, the undersigned, Owner of the hereon described tract of land, hereby set apart and subdivide the same into streets, as shown on this plat and name said tract of land 3600 West Road Dedication 2017 - 01 Corrected and hereby dedicate, grant and convey to Weber County, Utah all those parts or portions of said tract of land designated as streets, the same to be used as public thoroughfares forever.

Signed this _____ Day of _____, 2020.

— Weber County —

Commission Chair

Attest:



NARRATIVE

This Roadway Dedication was requested by Mr. Brad Blanch for the purpose of correcting the dedicated roadway 3600 West Road located in Weber County, Utah.

A Line between monuments found in the Northeast Corner and East Quarter Corner of Section 16 with a bearing of S 0°39'45" W was used as the Basis of Bearings for this Roadway Dedication.

See Record of survey filed with Weber County Surveyor's Office as filing # 6534 for complete Details of Boundary Determination and Findings

DESCRIPTION

A part of Lot 1, Section 16, Township 6 North, Range 2 West, Salt Lake Base and Meridian, Weber County, Utah:

Beginning at a point on the North Section Line of Section 16, said point being 1651.80 feet North 89°26'19" West from the Northeast Corner of said Section 16; and running thence South 12°16'53" East 591.39 feet; thence South 09°40'07" East 418.51 feet to the West Line of said Lot 1; thence three (3) courses along the West line of Lot 1 as follows: (1) North 32°25'15" West 85.33 feet to the Extension of the remnants of an old fence line; (2) North 09°40'07" West 339.07 feet; and (3) North 12°16'53" West 598.16 feet to said Section Line and the Northwest corner of said Lot 1; thence South 89°26'19" East 33.85 feet along said Section Line and the North line of said Lot 1 to the point of beginning.

Contains 32,127 Sq. Ft. or 0.737 Acres

WEBER COUNTY COMMISSION ACCEPTANCE

This is to certify that this plat, the dedication of streets and other public ways thereon are hereby approved and accepted by the commissioners of Weber County, Utah.
Signed this _____ day of _____, 2020.

Chairman, Weber County Commission

Attest:

Title:

WEBER COUNTY SURVEYOR

I hereby certify that the Weber County Surveyor's Office has reviewed this plat and all conditions for approval by this office have been satisfied. The approval of this plat by the Weber County Surveyor does not relieve the Licensed Land Surveyor who executed this plat from the responsibilities and/or liabilities associated therewith.
Signed this _____ day of _____, 2020.

Weber County Surveyor

WEBER COUNTY ENGINEER

This is to certify that this plat conforms with county standards and is duly approved by the Weber County Engineer.

Signed this _____ of _____, 2020

Weber County Engineer

WEBER COUNTY RECORDER	
ENTRY NO. _____	FEE PAID _____
RECORDED _____	FILED FOR RECORD AND AT _____
IN BOOK _____	OF OFFICIAL RECORDS, PAGE _____
FOR _____	RECORDED FOR _____
WEBER COUNTY RECORDER	
BY: _____	DEPUTY _____