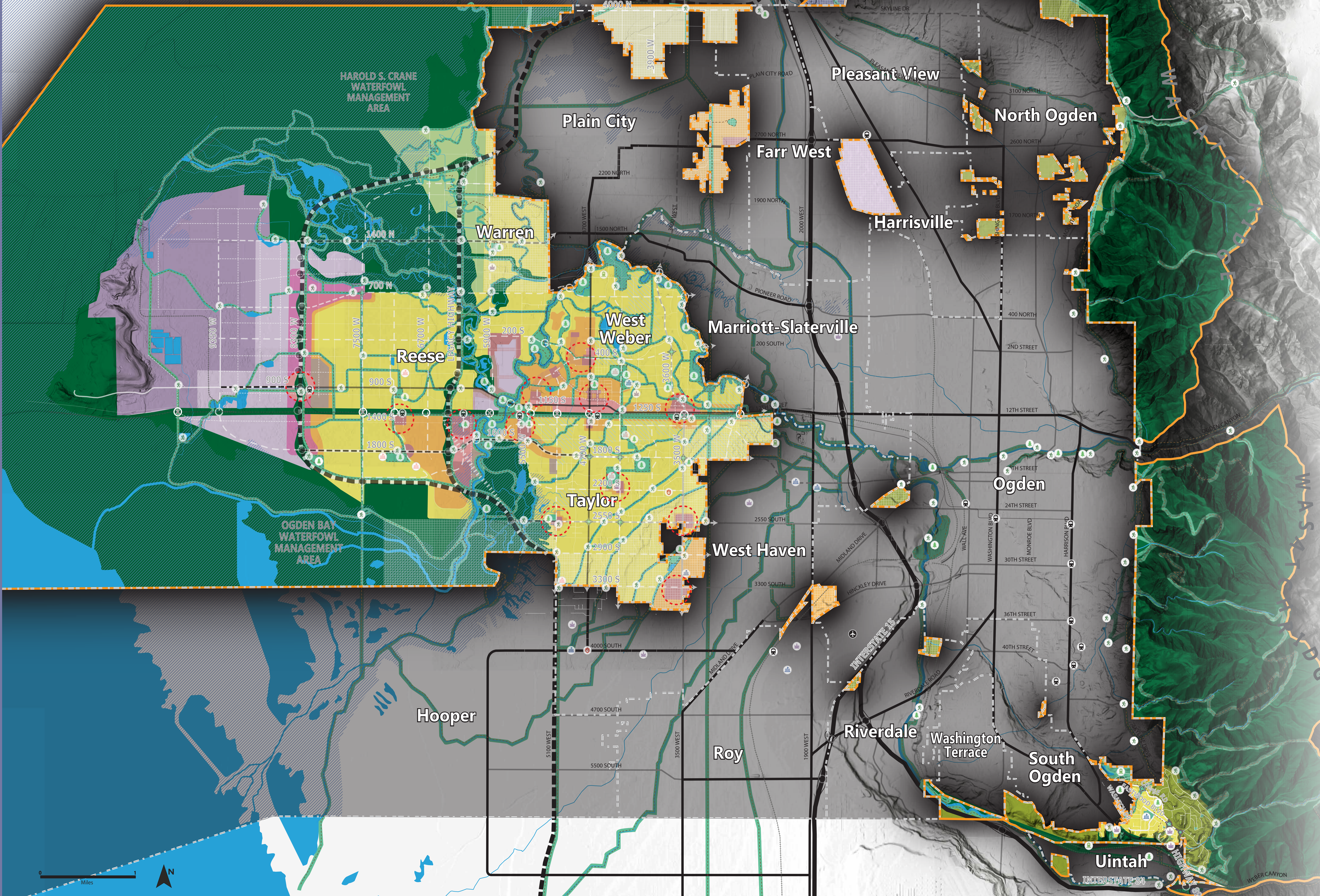
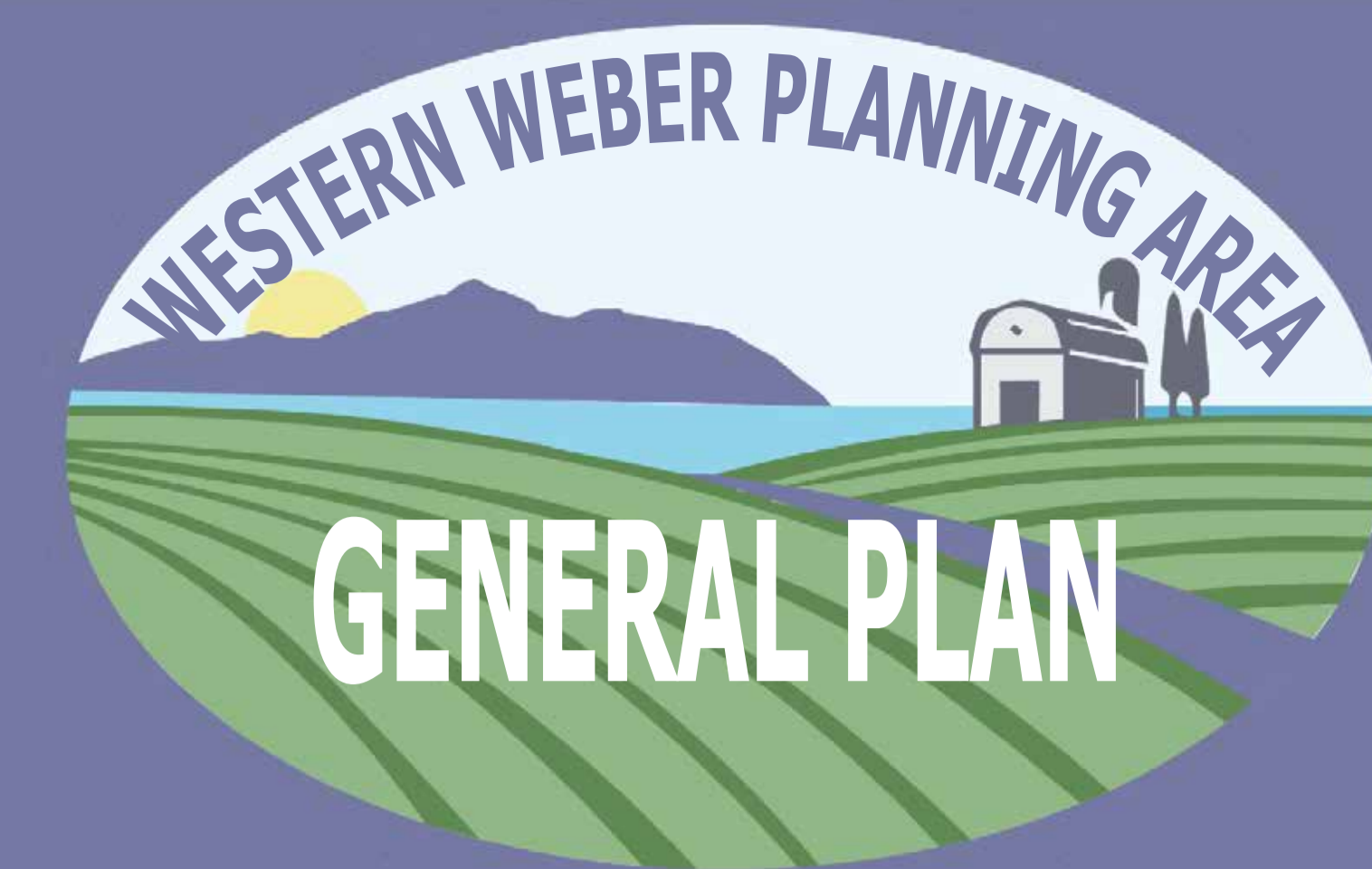


# FUTURE LAND USE MAP

DECEMBER 2024



### FUTURE LAND USES

- Natural Open Space
- Parks/Recreation
- Agriculture
- Very Large Residential Lots
- Medium to Large Residential Lots
- Mixed Use Residential
- Mixed Use Commercial
- Vehicle Oriented Commercial
- Business/Office/Tech
- Heavy Commercial
- Light Industrial/Manufacturing
- Industrial/Manufacturing
- Gravel Extraction
- Adjacent City Annexation Area
- TDR Open Space Preservation

### COMMUNITY

- Walkable Village (1/4 Mile Radius)
- Existing or Future Trail/Pathway
- Streetside-Pathway
- Bike Lane
- Park
- Existing School
- Church
- Emergency Services
- Trailhead
- Future School
- Cemetery
- Airport
- Incorporated
- Planning Area

### ENVIRONMENTAL

- Weber River
- Drainage Channel or Canal
- Lake/Waterbody
- FEMA Flood Boundary

### STREETS AND TRANSIT

- At-Grade Rail Crossing
- Existing or Future Bridge
- Existing or Future Arterial Bridge
- Existing or Future Transit Station
- Future Dedicated Transit Line
- Existing Major Arterial
- Future Major Arterial
- Existing Minor Arterial
- Future Minor Arterial
- Existing Major Collector
- Future Major Collector
- Existing Minor Collector
- Future Minor Collector
- Future Major or Minor Commerce
- Existing Major or Minor Neighborhood
- Future Major or Minor Neighborhood
- Future Roundabout

